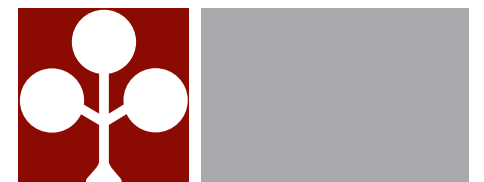


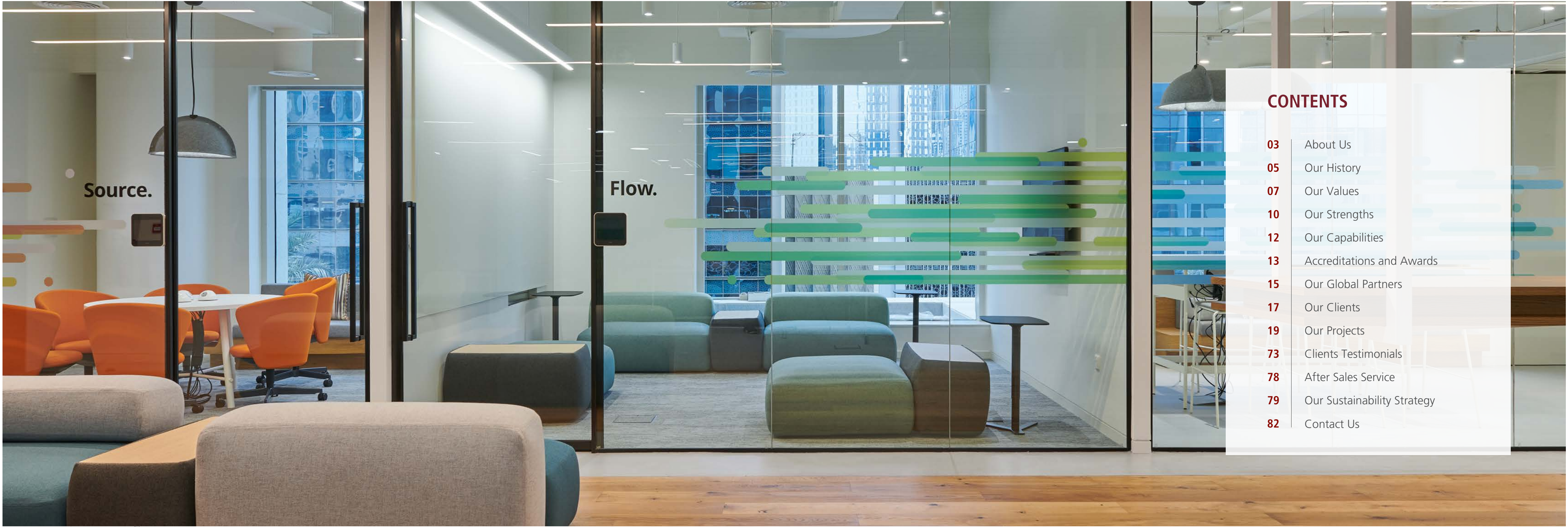


SUMMERTOWN INTERIORS



SUMMERTOWN

Your Fit Out Partner



Source.

Flow.

CONTENTS

03	About Us
05	Our History
07	Our Values
10	Our Strengths
12	Our Capabilities
13	Accreditations and Awards
15	Our Global Partners
17	Our Clients
19	Our Projects
73	Clients Testimonials
78	After Sales Service
79	Our Sustainability Strategy
82	Contact Us

ABOUT US

For 25 Years, Summertown Interiors has been among the United Arab Emirate's (UAE) leading and most sustainable contractors, offering superior quality interior fit out solutions.

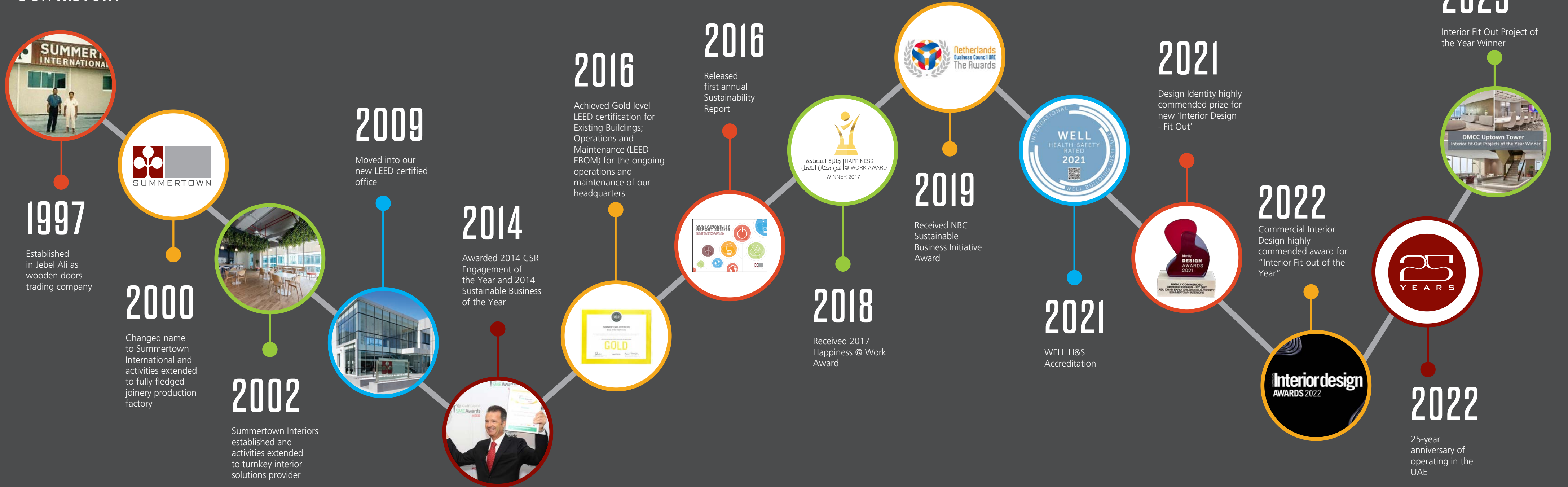
We specialise in commercial office, healthcare, and education projects for global Fortune 500 companies, government authorities and local businesses.

Summertown was the first fit out contractor to occupy LEED Gold certified interiors in the UAE and has also been awarded LEED Gold certification for its existing building; operations and maintenance (LEED EBOM). We are the UAE specialist in LEED certified projects and also an ISO certified company:

- ISO 9001:2015 Quality Management System certified
- ISO 45001:2018 Occupational Health and Safety Management Systems certified



OUR HISTORY



OUR VALUES

Our Vision

Our vision is to build commercial interior spaces in an environmentally friendly and sustainable way.

Vision

Mission

Values

Our Mission

Our mission is to consistently deliver high end sustainable interior projects on time and within budget, which help clients:

- **Achieve** their environmental goals, improving energy, water and resource efficiency for buildings
- **Create** inspiring workplaces to enhance employee health and happiness
- **Deliver** operational savings, increasing building value and decrease utility costs

Our Values

- **Quality** - devotion and attention to consistency and detail
- **Socially responsible organisation** - employee friendly and implementing sustainable business practices
- **Continuous improvement** in everything we do, never being satisfied
- **Diversity** - opportunity to achieve based on merit. Equal job and career opportunities regardless of religion, race, gender, or nationality
- **Effectiveness and efficiency** - prioritising, and doing things well





OUR STRENGTHS



25 YEARS OF EXPERIENCE

Our extensive personal experience with suppliers, consultants, materials, and documentation for the local market brings enormous benefit to our clients.



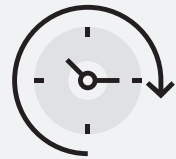
OFFER SUSTAINABLE SOLUTIONS

We are leaders in developing spaces that are energy efficient, environmentally friendly, and maximise productivity of its occupants. We offer free LEED to all projects over 2,000sqm



PRODUCT QUALITY

All projects are executed in accordance with the internationally recognised ISO 9001:2015 Quality and ISO:45001:2018 Occupational Health and Safety management systems.



ON TIME DELIVERY

Our project programs are fully mapped out by our Project Managers to take account of all key milestones and dependencies to ensure on time delivery.



PASSIONATE ABOUT OUR WORK

Our problem solver attitude, superior knowledge and expertise allows us to tackle challenges and overcome obstacles efficiently.



COMMERCIAL



HEALTHCARE



EDUCATION

OUR CAPABILITIES

- Sustainability and LEED specialists
- Industry specialists in Commercial, Education and Healthcare interior projects
- In-house labour workforce
- In-house MEP engineers and designers
- Fit Out and Design and Build services

Project delivery capabilities over the last 5 years:

13

LEED CERTIFIED
PROJECTS

75+

UAE COMMERCIAL
PROJECTS

25+

REPEAT CLIENTS

OUR ACCREDITATIONS



LEED

Summertown was the first UAE fit out contractor to be awarded Leadership in Energy and Environmental Design (LEED) Gold certification for the execution of its office interiors.



WELL Health-Safety Rated 2021



LEED EBOM

In 2016 Summertown achieved Gold level LEED certification for Existing Buildings; Operations and Maintenance (LEED EBOM) for the ongoing operations and maintenance of it's headquarters.



Health and Safety

Summertown is certified under the new international ISO 45001:2018 Occupational Health and Safety (OH&S) management system.



ISO 9001:2015

Summertown Interiors is certified under the ISO9001:2015 quality management system

OUR AWARDS



2019 Sustainable Business Innovation Award



CSR Advanced Label



2019 Best Workplace Sustainability Programme



2023 Commercial Interior Design Award Winner for Interior Fit Out Project of the Year



2014 Sustainable Business of the Year



2014 CSR Engagement of the Year



2021 Identity Design Award



2022 Commercial Interior Design Award

OUR GLOBAL PARTNERS

The United Workplace is a network of likeminded businesses, sharing a passion for the workplace – inspiring design, innovation and a culture of collaboration underpins everything we do. All members share common ethics, values and goals bringing with them a wealth of knowledge and experience. The fundamental goal of The United Workplace is to provide consistency of service and local insight on a global scale - to fulfil your workplace design, fit-out or commercial furniture consultancy and installation needs.

Globalisation is accelerating and having the ability to link businesses, exchange best practices and share knowledge is seen as a distinct advantage. The United Workplace consists of a handpicked collection of businesses selected in recognition that each country and market has specific requirements.

Beginning with the founding partners Fourfront Group in the UK and Amicus in Australia, The United Workplace has grown to encompass all corners of the globe, with members including Summertown Interiors in the Middle East and Contract Workplaces in Latin America.

For more information, please visit www.theunitedworkplace.com



Bringing together
global workplace experts

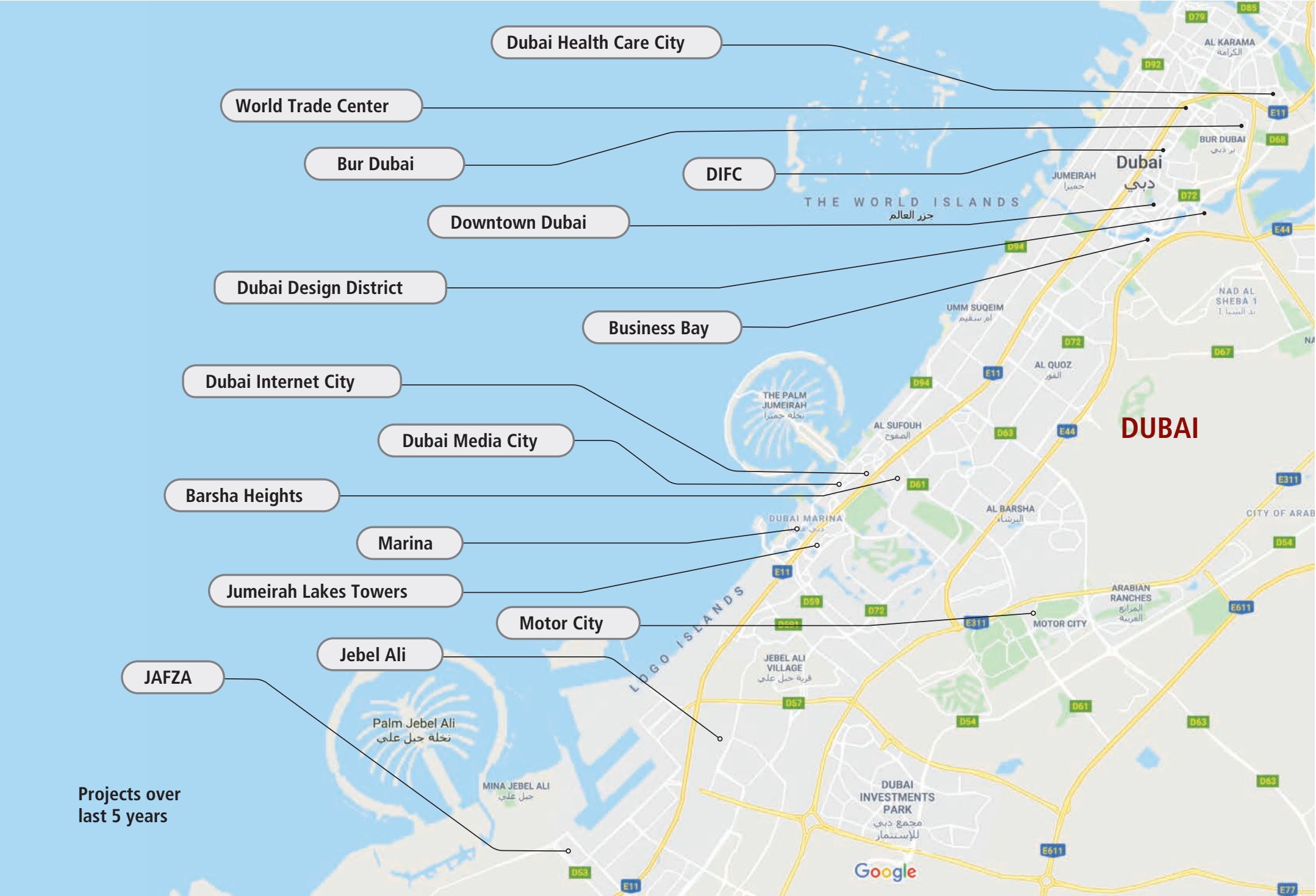
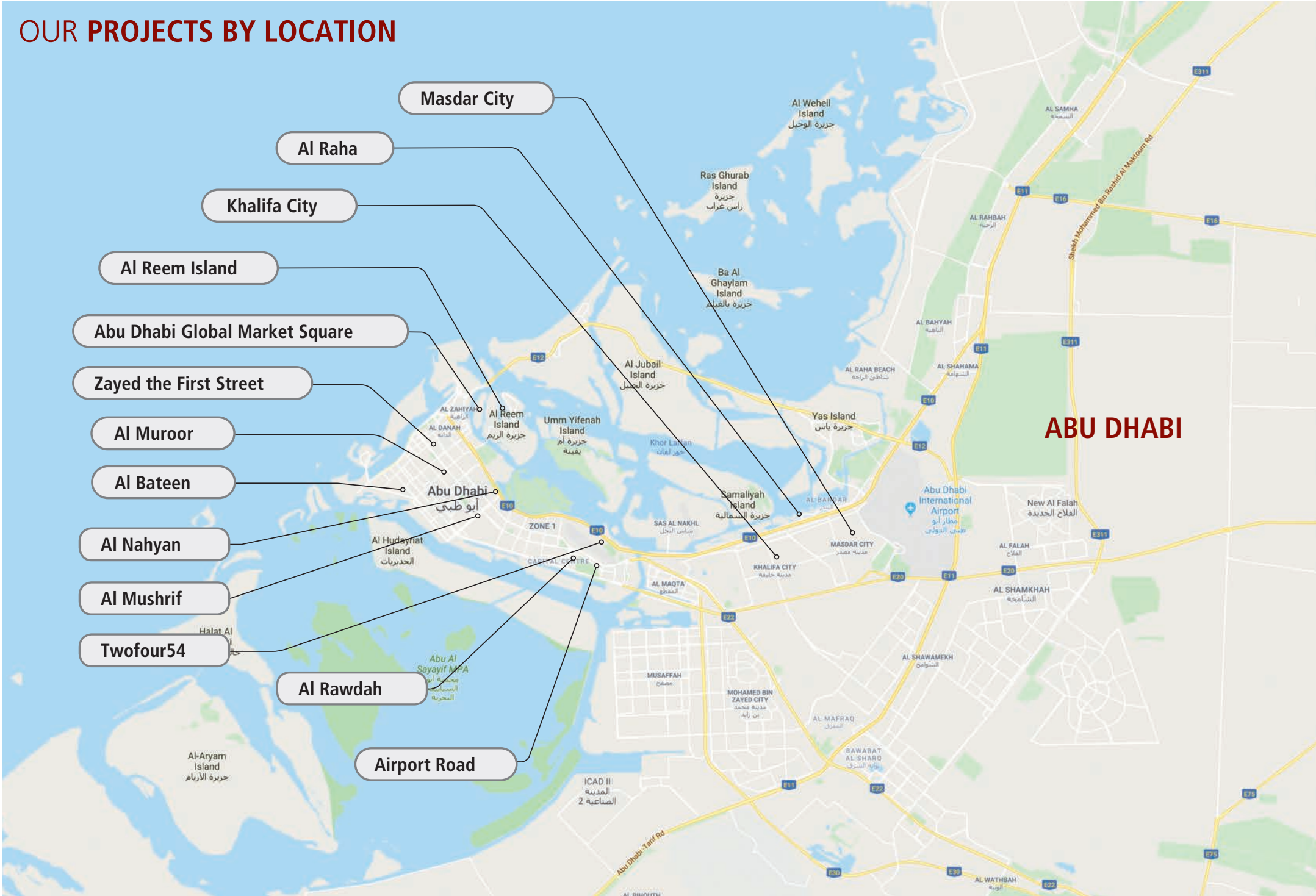


OUR CLIENTS

We’ve worked with leading global companies to create inspiring workplaces:



OUR PROJECTS BY LOCATION



Projects over last 5 years

DMCC Headquarters

Dubai Multi Commodities Centre (DMCC) had outgrown its existing workspace at Almas Tower. The brief for the new DMCC Headquarters in Uptown Tower was to create a state-of-the-art workplace that fosters human connection and collaboration in line with the building's aim to be a LEED Gold certified building.

The new office interior spans across three floors of the stunning new Uptown Tower. Standing at 340 metres, it is the first tower in the new Uptown Dubai District, and houses 22 floors of premium Grade A commercial office space.

Delivered in partnership with Dubai-based interior design studio Roar, as Lead Design Consultants supported by Black & White Engineering, and real estate firm JLL, the new headquarters for DMCC is a collaborative workspace that embodies DMCC's ethos.

A central staircase, a first-of-its-kind and precedent-setting element within DMCC Uptown Tower, become the visual centrepiece symbolizing the essence of collaboration and connectivity throughout the workspace. This feature served as a testament to our commitment to pushing the boundaries of design and fit out. Complementing the spectacular views of Dubai's cityscape, the new workspace has soft grey natural tones, punctuated by subtle colour accents in the loose furniture that add a touch of variation, natural marble and bespoke joinery.

Size: 4,000 sqm

Location: DMCC, Dubai

Sector: Commercial

Designer: Roar



Ora Developers

ORA is a leading name in the field of designing and developing luxury lifestyle destinations in unique locations, bringing world class expertise, exceptional attention to detail and visionary ideas to every landmark project they work on.

Summertown worked in partnership with the design team at DWP to deliver the fit out of the 1,100 sqm commercial office space.

The project aimed for a traditional fit-out in line with DWP's vision, creating a functional space with ergonomic furniture and smart office solutions. Key elements include biophilic design, emphasizing a connection with nature, a balanced approach with open and closed rooms, a CEO Suite blending comfort and aesthetics, a terrace panorama offering Dubai landmark views, and a focus on community through collaborative design, fostering a strong sense of community within the workspace.

Size: 1,100 sqm

Location: One Central, DWTC

Sector: Commercial

Designer: DWP

Certification: LEED Silver



Sprinklr

Sprinklr is an American software company with its headquarters based in New York City. Sprinklr develops SaaS customer experience management (CXM) platform combining different applications for social media marketing, social advertising, content management, collaboration, employee advocacy, customer care, social media research, and social media monitoring.

Summertown worked closely with design firm Roar to deliver the fit out of this stunning commercial office in the heart of Dubai Internet City. The project scope was to design and build the entire office floor space on Level 5 of Injaz Building in line with the requirements of Sprinklr to create a space to suit the Client's needs for a flexible and evolving space for their business to thrive.

The space incorporates a combination of informal and formal intersections of flexible collaborations, huddle and presentation spaces with playful acoustic solutions, privacy options and the use of industrial materials.

Size: 2,000 sqm

Location: Dubai Internet City

Sector: Commercial

Designer: Roar

Certification: LEED Silver



OQ Trading

Summertown worked in close collaboration with leading design firm AAID, and Project Management firm CSQ, to deliver this sustainable project in line with Leadership in Energy & Design (LEED) standards. The brief was to demolish and refurbish OQ Trading existing office floor and fit out a new additional workspace on the below floor spanning a total of 2,325sqm.

A stunning design inspired from the Movement of Energy, with nature reflecting various dynamic environments and landscapes; from Sunrise to Sunset, the transformational power of the earth's elements creating the environment we live and thrive in.

The double floor workspace encompasses, an inviting reception, boardroom, meeting rooms, workstations, bespoke work and wellness areas including a café, majilis, recreation area and gym.

Size: 2,325 sqm

Location: Legatum Plaza, DIFC, Dubai

Sector: Commercial

Designer: AAID

Certification: LEED Silver



LinkedIn

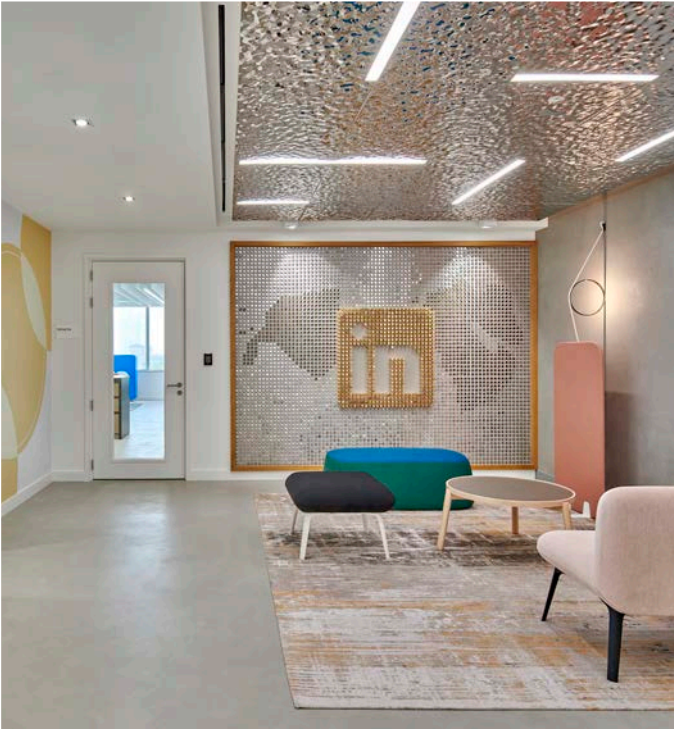
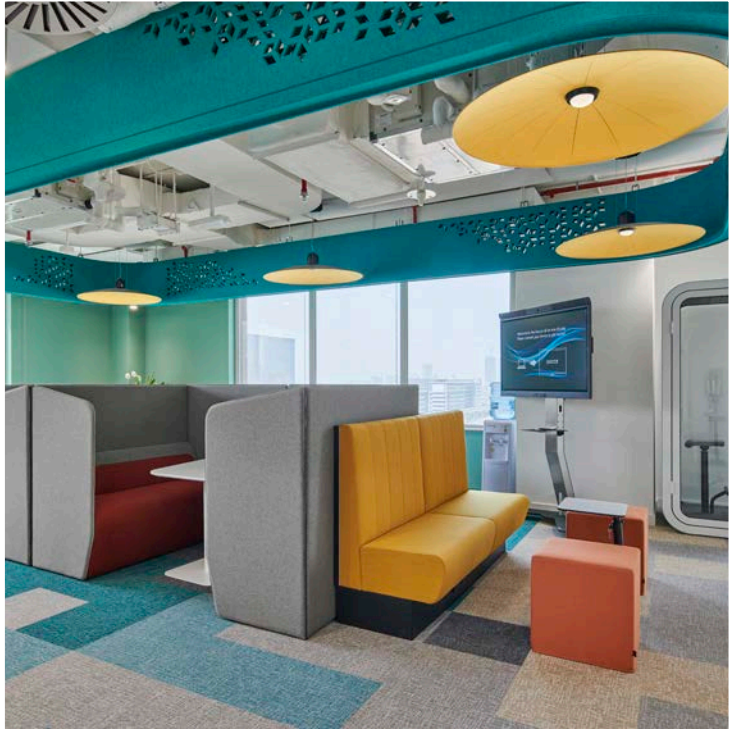
The brief was to revitalise LinkedIn’s Middle East & North Africa Headquarters with a complete refurbishment across 2 floors that would meet LEED (Leadership in Energy and Environmental and Design) and WELL Gold Certification.

Working in close collaboration with Dubai-based designers, SAY studio, CBRE Project Management, and Cundall the fit out was both challenging and rewarding with the variety of flexible workspaces, creative design elements and bespoke joinery incorporated into the design.

To ensure the LinkedIn project team were abreast of progress during the fit out we used our Matterport 3D scanning technology, which enabled their European team view progress virtually without travelling to Dubai.

Key highlights of the new sustainable workplace include the flexible collaborative working spaces, dedicated media recording room, a café, micro-kitchen co-working space, mother’s room, multifunctional training room, and games room.

Size: 1,600 sqm
Location: Business Central Tower, Dubai
Sector: Commercial
Designer: SAY Studio
Certification: LEED and WELL Gold



The Supreme Council for Motherhood and Childhood (SCMC)

This three-level design and build project was delivered in close collaboration with Dubai-based interior design studio, Roar. The design pays homage to the UAE's cultural heritage, which was achieved with creative elements such as design structures that nod to the local desert landscape.

Each area of the SCMC workspace has been curated to have its own breath of life and create a sense of exploration for users, with a new experience in each space. For example, the ground floor has been designed to mimic the idea of a traditional outdoor courtyard, with the use of arches and biophilia. From the auditorium to the training rooms and offices etc., the journey continues with unique geometric shapes and structures on all three floors.

In line with the UAE government's sustainability focus, Summertown ensured the project was completed in line with the stringent Abu Dhabi Green Building Estidama Pearl 2 Building Rating System, which SCMC is expected to be awarded in the coming months.

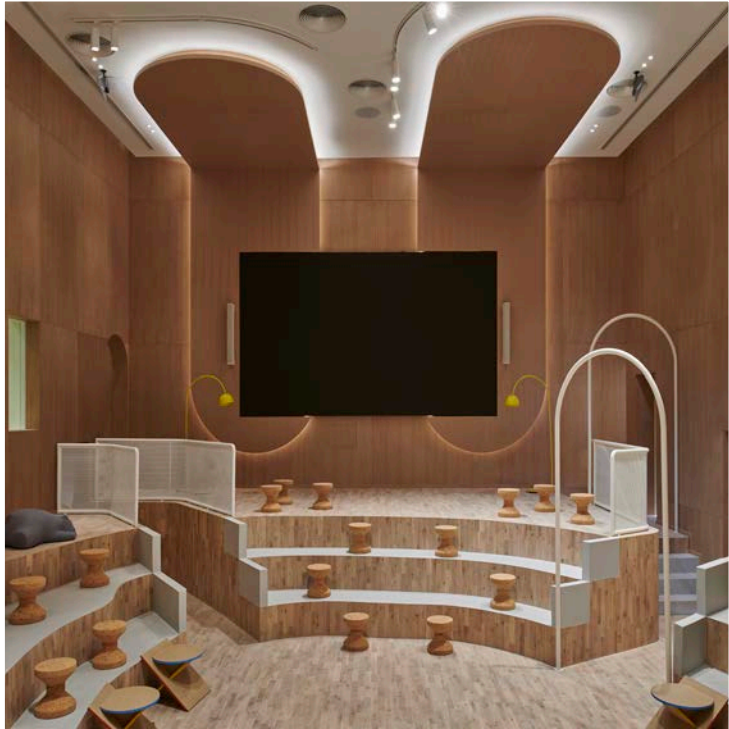
Size: 3,500 sqm

Location: Abu Dhabi

Sector: Commercial

Designer: Roar

Certification: Abu Dhabi Green Building Estidama Pearl 2 Building Rating System



Emirates Development Bank (EDB)

Emirates Development Bank (EDB) is a UAE government owned bank established to support the UAE's economic diversification agenda, with specific focus on small and medium enterprises (SME)s.

In line with EDB's commitment to business banking, EDB's brief for their new business banking center located in One Central, on Sheikh Zayed Road in the Dubai World Trade Centre, was to create a welcoming environment for clients that was also a smart workplace.

The design and build of EDB's new workplace was delivered in close collaboration with leading Dubai-based design studio, Roar. Roar's design integrated EDB's iconic sail logo, inspired by the 'Sail' found in traditional dhows, their vibrant blue brand colour, and a material palette of terrazzo, metal, acoustic felts, glass and marble.

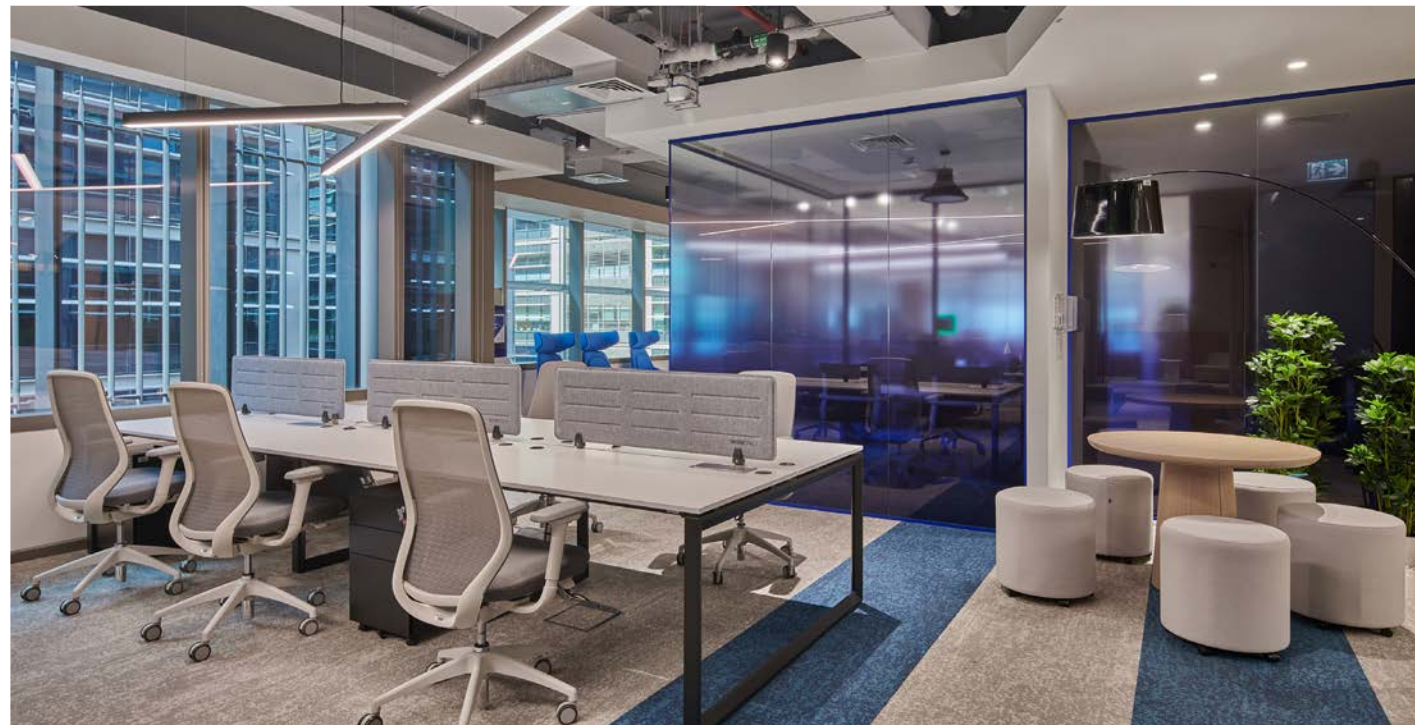
The new business banking centre incorporates both client and employee zones. Upon entry is the modern reception area, adjacent is the café style pantry. Further functional spaces include smart meeting rooms with the latest AV and conferencing technology, open workstations, and a boardroom.

Size: 930 sqm

Location: One Central, DWTC

Sector: Commercial

Designer: Roar



Times Square Center

‘Picnic Square’ is Dubai’s new family-focused dining destination at Times Square Center, Sheikh Zayed Road, Dubai. Summertown collaborated closely with Times Square Center management team to deliver the 2,330 sqm sustainable design and build project, handing over the vibrant new dining space to the Times Square Center in November 2021, ready for their new food and beverage partners to move in.

Setting a new standard for shopping mall open plan dining areas, Picnic Square’s contemporary design features natural materials, the integration of biophilic elements such as plants and greenery, and a variety of high-quality seating options and areas. Family-friendly seating zones including stylish ‘private pods’ for mothers to feed their babies in privacy complement the functional open plan design.

In line with Times Square Center’s sustainability focus, Summertown applied sustainable building practices whilst building the project and is aiming to achieve Leadership in Energy and Environmental Design (LEED) certification for the new artisan food dining area.

Size: 2,330 sqm

Location: Times Square Center, Sheikh Zayed Road, Al Quoz, Dubai

Sector: Food and Beverage

Certification: LEED Certified



Takeda

The new LEED certified Middle East headquarters for Japanese pharmaceutical company, Takeda, is a stunning contemporary office with a blend of traditional Japanese design philosophy with modern mathematical efficiency that is anchored in local culture. Located in the prestigious One Central Development in the Central Business District of Dubai World Trade Centre Authority, Summertown delivered the 'design and build' office project in partnership with Dubai-based interior design firm Roar, and CBRE project management.

During the construction phase, the project team established environment friendly strategies for construction waste management, segregating the waste and sending it for recycling/reusing/ composting to reduce the carbon footprint of the project. The project achieved LEED Silver certification.

Biophilia and natural materials including wood and raw exposed concrete are key to the workspace design alongside the subtle inclusion of the corporate philosophy it calls "Takeda-ism" based on four values: integrity, fairness, honesty and perseverance. Highlights of the workspace include the boardroom inspired by a Japanese tea house, and reception modelled on the 'genkan' entrance hallway concept of a traditional Japanese home.

Size: 2,075 sqm

Location: One Central Development, DWTC

Sector: Commercial

Designer: Roar

Certification: LEED Silver



Abu Dhabi Early Childhood Authority (ECA)

Summertown Interiors was appointed by ECA to translate Roar Studio’s vibrant cutting-edge design, into a workspace for 100 education experts that are shaping the future of pre-schoolers in Abu Dhabi.

The entrance lobby welcomes guests with a life-size friendly monster ‘Big Blue’ and an array of playful, vibrant and tactile joinery features, which sets the tone for the rest of the space. Flowing walkways connect a variety of bespoke hubs such as workstations, naturally lit meeting rooms, a children’s playroom and purpose-built maternity room.

The ECA fit-out project is an amalgamation of a hybrid workspace and child-centric educational play area, which means that every space is unique and appropriated to its user.

Every room is completely different in its shape and aesthetic, from floor material to colours, custom-made fixtures and bespoke furniture pieces. Additional elements include the use of soft and tactile textures throughout and bio-folding walls to create flexible meeting spaces for either one large or two small rooms.

Size: 1,865 sqm
Location: Abu Dhabi
Sector: Commercial
Designer: Roar
Certification: LEED Silver



Sanofi

Sanofi desired a new workspace that facilitated collaboration and communication, had an outdoor feeling inside and could achieve LEED certification.

Summertown worked closely with designers Bluehaus to ensure the fit out incorporated both the greenery to emphasize a park theme and various collaboration and social zones under the LEED guidelines.

The result for the French multinational pharmaceutical company is a fantastic sustainable workplace with a mix of indoor greenery incorporated into works station areas, and collaboration areas. Highlights include the light filled stylish cafe, welcoming reception experience and the mix of modern sleek meeting zones.

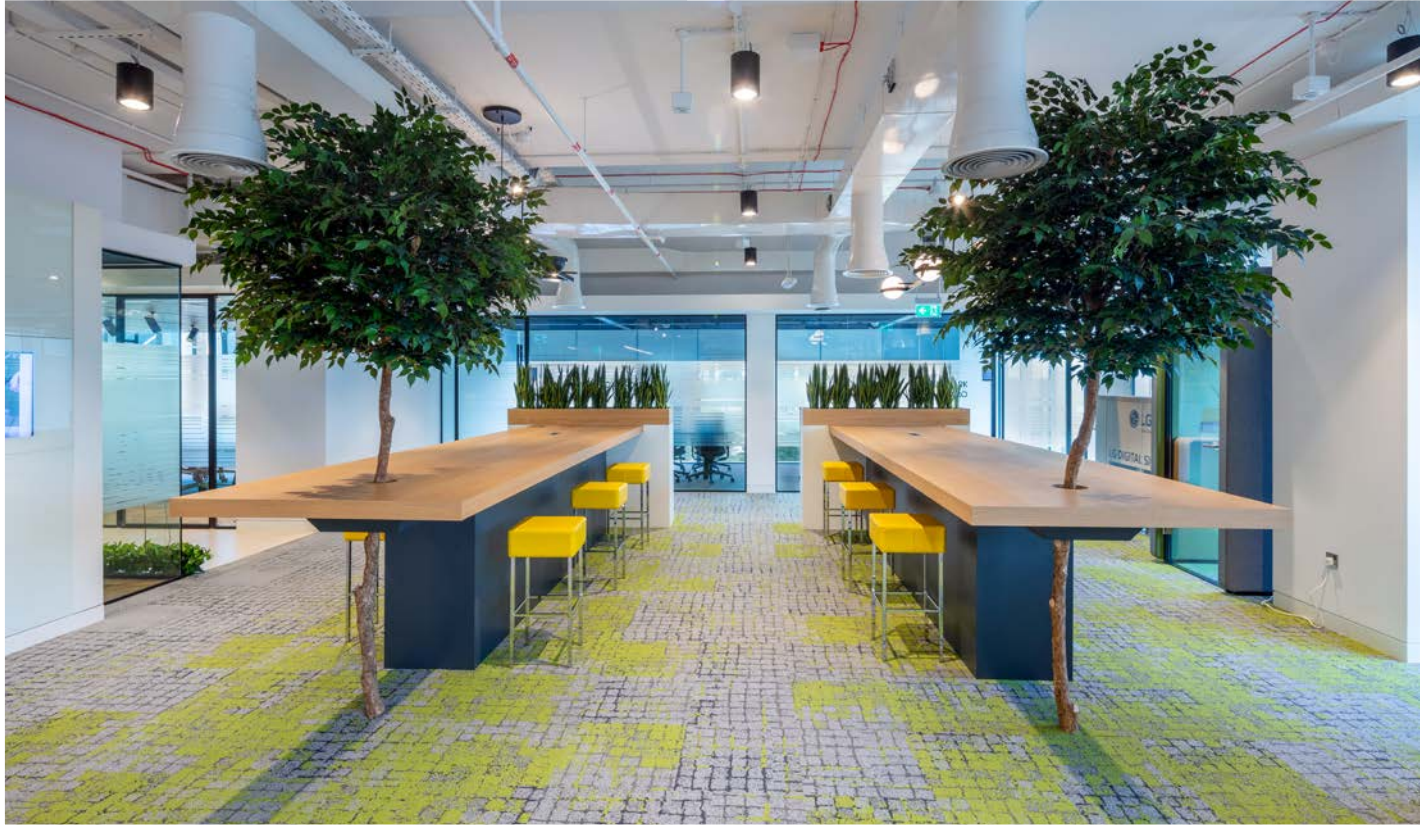
Size: 2,500 sqm

Location: JLT One, DMCC, Dubai

Sector: Commercial

Designer: Bluehaus Group

Certification: LEED Silver



DIFC Innovation Hub

Dubai International Financial Centre’s (DIFC) aspiration for the Innovation Hub, was to provide contemporary offices that characterise campus style workspaces conducive to an environment of collaboration, activity-based working with fantastic amenities -including a public auditorium for sharing ideas and knowledge, and social connection areas in the heart of DIFC.

DIFC Innovation Hub serves as the definitive destination for nurturing the next unicorns from the region, while helping build a strong FinTech sector and create new jobs for talented professionals.

The scope of the design and build project was to design and fit out existing shell and core spaces into flexible office suites, effectively a ‘plug and play’ option for companies; and design and build the public auditorium and connection zones.

The project was challenging and complex as it evolved and increased in scope during the build.

Summertown collaborated with several design partners, including Roar, and Say Studio, to design and fit out in total 22 office suites plus the social collaboration areas and public auditorium.

Size: 3,500 sqm
Location: Gate Avenue, DIFC, Dubai
Sector: Commercial
Designer: Roar, SAY Studio and Summertown
Certification: LEED Silver



Government of Dubai Media Office

The Government of Dubai Media Office (GDMO) required a new Dubai Headquarters which also encompassed the Dubai Press and Members Club.

The new headquarter location is the prestigious One Central Development in the Central Business District of Dubai World Trade Centre Authority (DWTCA). Summertown delivered the 4,200 sqm office fit out project in partnership with Bluehaus Group's design team and project managers from 3Sixty Consult.

Inspired by the concept 'Castle in the Sand', the office reflects GDMO's vision to create a space that 'feels like home', combining a blend of nostalgia and modernity.

The open-plan workspace features free-flowing desk areas to encourage team collaboration and transparency, sound-proof state-of-the-art meeting rooms, as well as welcoming Majlis that is a modern expression of the traditional Arabic hospitality concept. Designed to facilitate productivity and provide access to the latest media equipment and technology the office incorporates a Master Control Room (MCR), Central Apparatus Room (CAR), and several recording, editing and voice over booths with acoustic treatments for sound proofing and absorption. Biophilic design elements and plants feature throughout the space including an indoor 'Contemplation Garden' and outdoor terrace garden.

Size: 4,200 sqm

Location: One Central Development, DWTC

Sector: Commercial

Designer: Bluehaus Group



American International Group

American International Group, Inc. (AIG), one of the leading global insurance organizations with over 100 years of experience, were relocating from their existing offices in Dubai International Finance Centre (DIFC) to a new premise in Building 8, Gate Village, DIFC.

The brief was to design and build a new Middle East office, that incorporated AIG's corporate branding and with a benchmark from AIG's Hamburg and Milan offices, whilst adhering to their subtle brand colour palette. Summertown entrusted SAY Studio to design the new workplace, and worked in close partnership with Compass project management team to deliver the new head office for AIG.

The result is a crisp, modern, functional workspace that incorporates a large boardroom that can accommodate 24+ people, open workstations, several meeting rooms, collaboration areas, and reception. Fabric covered acoustic wall panels provide welcoming insulated meeting rooms for those important 1:1 meetings and teleconferences, and quiet focus time. Furthermore, the new office has an inviting pantry area with a variety seating options that is drenched in natural light from the large adjoining outdoor terrace.

Size: 1,300 sqm

Location: Dubai International Financial Centre

Sector: Commercial

Designer: SAY Studio



Private Government Office

The scope of the works entailed the demolition of the existing office and new fit out in line with LEED green building criteria. It is expected that the project will reach the client’s goal of LEED Gold certification.

Summertown Interiors collaborated closely with designers DWP on the fit out of this UAE government office to achieve the high specification finishes specified in the design.

The office space consists of several unique team collaboration meeting zones, large open plan desk areas, strategically placed quiet zones, boardroom, a spacious majlis, and a variety of meeting rooms.

Highlights of this office include the wooden joinery featured in the boardroom with bespoke marble table, and stylish pantry with striking marble bench.

One of the fit out challenges of this design was the large wooden beams overarching the open meeting zones, but well worth the effort in keeping true to the design.

Size: 5,500 sqm

Location: Bur Dubai

Sector: Commercial

Designer: DWP Design

Certification: LEED Gold



D3 Business Center

The Dubai Design District (d3) Business Center is a new high-end co-working space that provides office and community spaces to enable companies and freelancers alike to collaborate and network.

Summertown worked closely with project managers Tamdeen to enhance the fit out, design and create the featured wooden joinery. The end result is a fantastic selection of individual offices, and community collaboration areas for entrepreneurs and new businesses in the d3.

Features of the contemporary business center include a large public activity-based space with cleverly designed wooden terrace seating, trees and swings with abundant natural light. In addition to the unfurnished micro office studios available for rent, there are small work stations in the hallways, and a public transformation collaboration room with folding benches and stools.

The hexagonal inspired design also features over 1,000 starry ceiling sky lights, and a geometric wooden reception panel.

The Dubai Design District Business Center is part of the co-working spaces developed by D3 that entrepreneurs and developing businesses can rent by the day, month or year.

Size: 1,600 sqm

Location: Dubai Design District (d3)

Sector: Commercial

Designer: Eight Inc



Salama Bint Hamdan Al Nahyan Foundation (SHF)

Designed by Bluehaus Group, the stylish new modern industrial design workplace incorporates a library, reception, meeting rooms and collaboration areas.

Summertown undertook the full interior fit out of SHF's new office located on the ground and mezzanine level of the Al Mamoura Building in Abu Dhabi.

A highlight of the design is the biophilia walls and the artwork curated by SHF.

The Salama bint Hamdan Al Nahyan Foundation (SHF) who's mission is "to invest in the future of the United Arab Emirates by investing in its people" develops and supports strategic initiatives in the areas of Art, Culture and Heritage; Early Childhood Development; and Health.

Established in 2010, the SHF is the family foundation of Her Highness Sheikha Salama bint Hamdan Al Nahyan.

Size: 700 sqm
Location: Al Mamoura, Abu Dhabi
Sector: Commercial
Designer: Bluehaus Group



Smart Dubai Office

Summertown Interiors collaborated very closely with designers DWP on the delivery of the Smart Dubai office that utilises leading technology for a seamless work environment.

Summertown with its expertise in green projects, also managed the LEED certification process for this project and reached the client’s goal of LEED Gold certification

The office space features a ‘Virtual Reception’ and many working spaces utilising different materials and fixtures, including a café, auditorium, majlis, quiet zones, lab and meeting rooms. These spaces include writable walls, a live feed LED in the café, and modern designed furniture.

Each area features the highest quality fit out materials and finishes, demonstrating Summertown’s process driven approach, craftsmanship and attention to detail during the fit out.

Despite the complexity of the joinery, technology (AV & IT), and a set opening date, the 14 week timeline was met with a fast track program.

Smart Dubai office is located in D3 Design District, Dubai’s ‘Smart City’, and part of the framework of the Dubai Plan 2021.

Size: 1,850 sqm
Location: Dubai Design District
Sector: Commercial
Designer: DWP Design
Certification: LEED Gold



Mediclinic Creek Harbour

Mediclinic is conveniently located in the heart of Dubai Creek Harbour.

The modern and welcoming medical facility provides a warm, supportive and kid-friendly environment where individuals and families can pursue optimal health and wellbeing while feeling comfortable and cared for. Summertown was appointed to fit out the new design from Massa Interior Design & Architecture.

The scope of the fit out included the merging of three existing ground floor units into one and incorporated new patient waiting areas, consultation rooms, nurse's station, and medical utility rooms.

Size: 872 sqm

Location: Dubai Creek Harbour

Sector: Healthcare

Designer: Massa Interior Design & Architecture



American Hospital Clinic and StayWell Pharmacy, Dubai Hills Mall

American Hospital is a leading private healthcare provider in the Middle East established in 1996 with the goal of providing world-class medical services. As part of their strategy to provide dedicated clinics closer to the community they serve, American Hospital appointed Summertown to build their next community clinic and StayWell Pharmacy in the brand new Dubai Hills Mall.

The American Hospital Dubai Hills clinic fit out incorporated Consulting, Treatment and Pediatric Rooms, Laser Treatment Room, Nurses Station, Reception, Cashier area, and utility rooms.

The StayWell Pharmacy is located conveniently opposite the American Hospital clinic in the mall, features flowing curved bespoke joinery and bamboo design elements to provide a relaxed ambience.

Both projects were delivered in tandem on time for the grand opening of Dubai Hills Mall in February 2022.

Size: 500 sqm + 138 sqm
Location: Dubai Hills Mall
Sector: Healthcare
Designer: Massa Interior Design & Architecture and Conin



Mediclinic Parkview Sports Medicine and Rehab Centre

Mediclinic’s Sports Medicine and Rehab Centre in Dubai, located in Mediclinic Parkview Hospital, is a first of its kind integrated facility for the treatment of sports injuries, sports performance, musculoskeletal complaints, and a full range of rehabilitation therapy.

Summertown undertook the full interior fit out of the 1,107 sqm Sport Medicine and Rehab Centre including a state-of-the-art gym that will enable the specialist medical professionals to develop bespoke programmes for their patients, patient rooms, and reception.

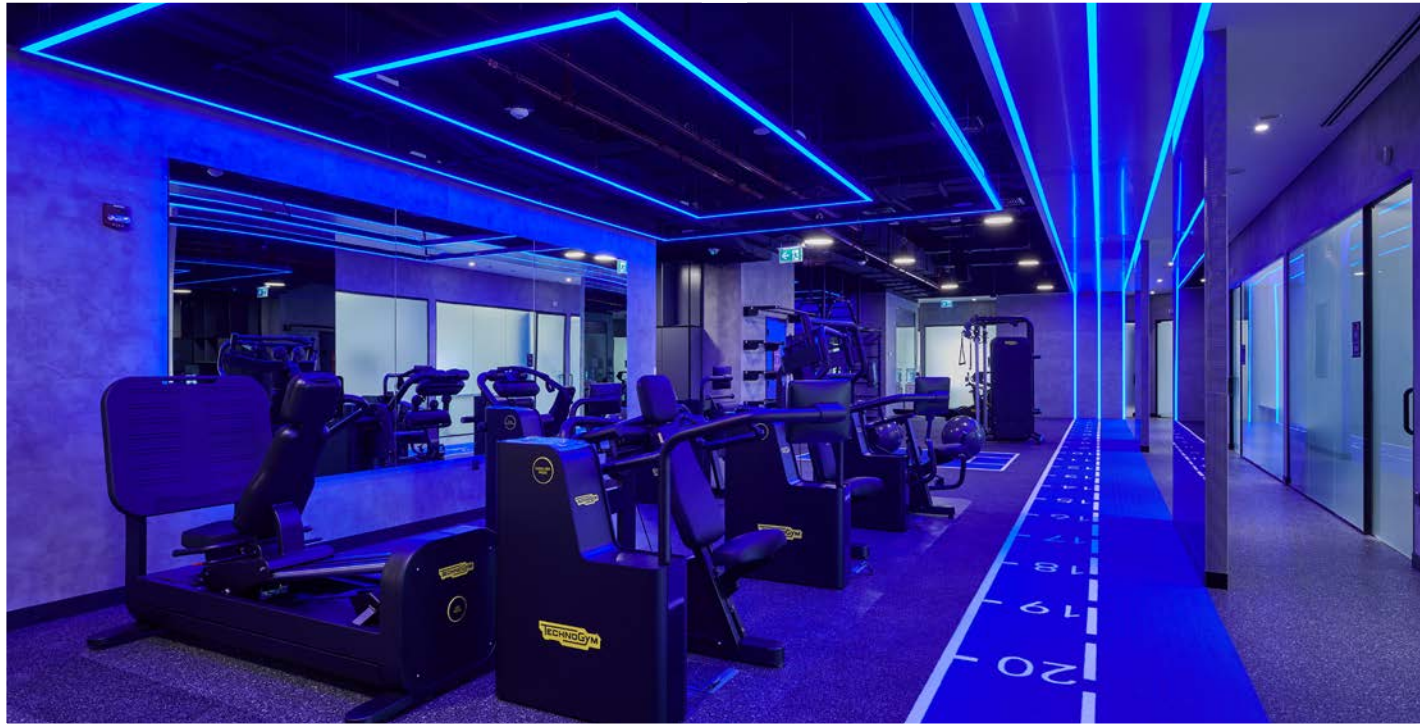
The design was achieved through a collaboration between, Stantec, who designed the main areas and patient rooms, and Leisure Direct Design who developed the design for the gym area.

Size: 1,107 sqm

Location: Parkview Hospital, Dubai

Sector: Healthcare

Designer: Stantec and Leisure Direct



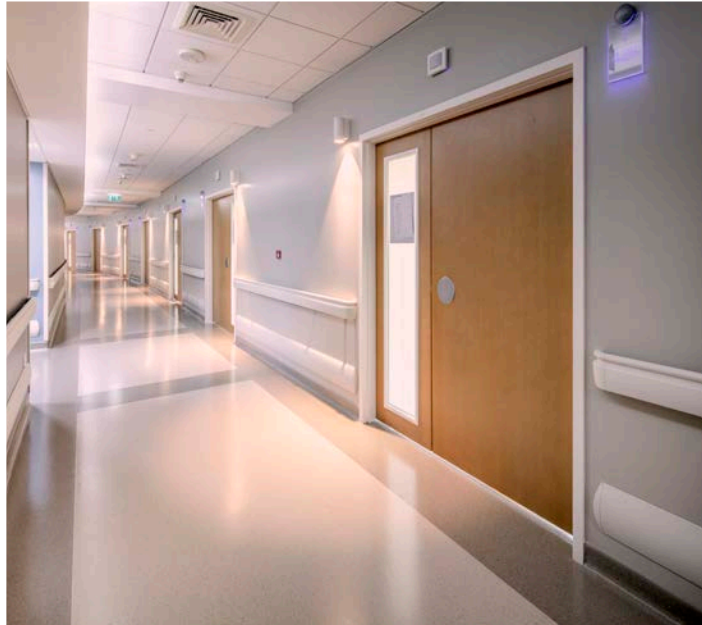
Mediclinic

Summertown undertook the full interior fit out of the fourth floor of Mediclinic’s City Hospital. Ensuring design continuity across the hospital, the new refurbished floor incorporates a nurse’s station, 30 in-patient rooms with ensuite bathrooms, waiting area, and utility rooms.

Mediclinic City Hospital is a state-of-the-art multi-disciplinary hospital located in Dubai Healthcare City.

Mediclinic Middle East which is part of Mediclinic International, a private hospital group operating in Southern Africa, Switzerland and the United Arab Emirates (UAE), operates seven hospitals and over 20 clinics in the UAE.

Size: 1,500 sqm
Location: Dubai Healthcare City
Sector: Healthcare
Designer: Massa Design



Priory

The Priory Group, a leading healthcare provider from the United Kingdom, sought to establish a wellbeing clinic in Abu Dhabi following the success of its Dubai Wellbeing Center which opened in 2017. The new Abu Dhabi Priory Wellbeing Center is located in Al Bateen, Abu Dhabi, and are specialized in providing psychiatric and psychological mental health, neuro-developmental and behavioural assessments and treatment to adults and children.

The brief was to transform a new 1,024sqm villa into a welcoming wellbeing center for specialist consultations, including wellbeing, occupational, and speech therapy. Key to Priory's wellbeing center was a space with a calming atmosphere for adults and children, and consultation rooms and areas that provided privacy. Designed by LXA, translated by Summertown Interiors, and project managed by PMK Consult, the new wellbeing center design incorporates a subtle colour palette, natural timber finishes, opaque glazing for privacy and UAE inspired wall graphics. The children's consultation and play areas are soothing spaces with acoustically treated seating nooks to allow for a quieter and more private waiting experience.

Size: 1,024 sqm

Location: Al Bateen, Abu Dhabi

Sector: Healthcare

Designer: LXA and Summertown



Ahrend Healthcare Studio

Royal Ahrend, an international leader in office furniture sought Summertown to fit out their first global Ahrend healthcare innovation and inspiration studio.

Designed by Massa Design, the state-of-the-art healthcare studio was designed to enable healthcare providers to experience and see:

- A fully functional interior environment that meets all the demanding healthcare requirements and regulations
- Establish an innovative and timeless space complying with the wellbeing design principles
- Improve healthcare design-oriented solutions for that meet today’s patient’s demands
- Showcase the latest equipment and sustainable materials

Summertown collaborated closely with Ahrend, Massa Design and around 20 different healthcare equipment and material suppliers to execute the studio fit out.

The studio encompasses a waiting and reception area, separate meeting room, Doctor’s office, and fully-fitted patient room with caregiver zone.

Size: 112 sqm

Location: Dubai Design District

Sector: Healthcare

Designer: Massa Design



ALEF Education

Based in the UAE, Alef Education is a global education technology company that focuses on technology-enabled learning.

In collaboration with DWP design and Carter and Associates, Summertown executed the fit out of Alef Education’s new Abu Dhabi HQ. The goal was to create a smart HQ that is bright, modern and functional with a welcoming atmosphere.

The scope of work included the fit out of open plan works areas, pantry with cafe style seating, boardroom and various meeting rooms.

Size: 3,390 sqm

Location: Abu Dhabi

Sector: Education

Designer: DWP Design



Dubai Institute of Design and Innovation

The Dubai Institute of Design and Innovation (DIDI) is a private, not-for-profit education institution, established by TECOM Group, part of Dubai Creative Clusters Authority. Located within the Dubai Design District (d3), DIDI's curriculum has been developed in collaboration with two of the world's leading universities for design; Massachusetts Institute of Technology (MIT) and Parsons School of Design.

The fit out project consisted of an admissions and administration office on the ground floor, and a library and student working area on the mezzanine floor. DIDI's temporary home was designed to be fresh, modern and functional until completion of their new d3 campus designed by architects Foster + Partners.

Size: 2,105 sqm
Location: Dubai Design District
Sector: Education
Designer: Design Design



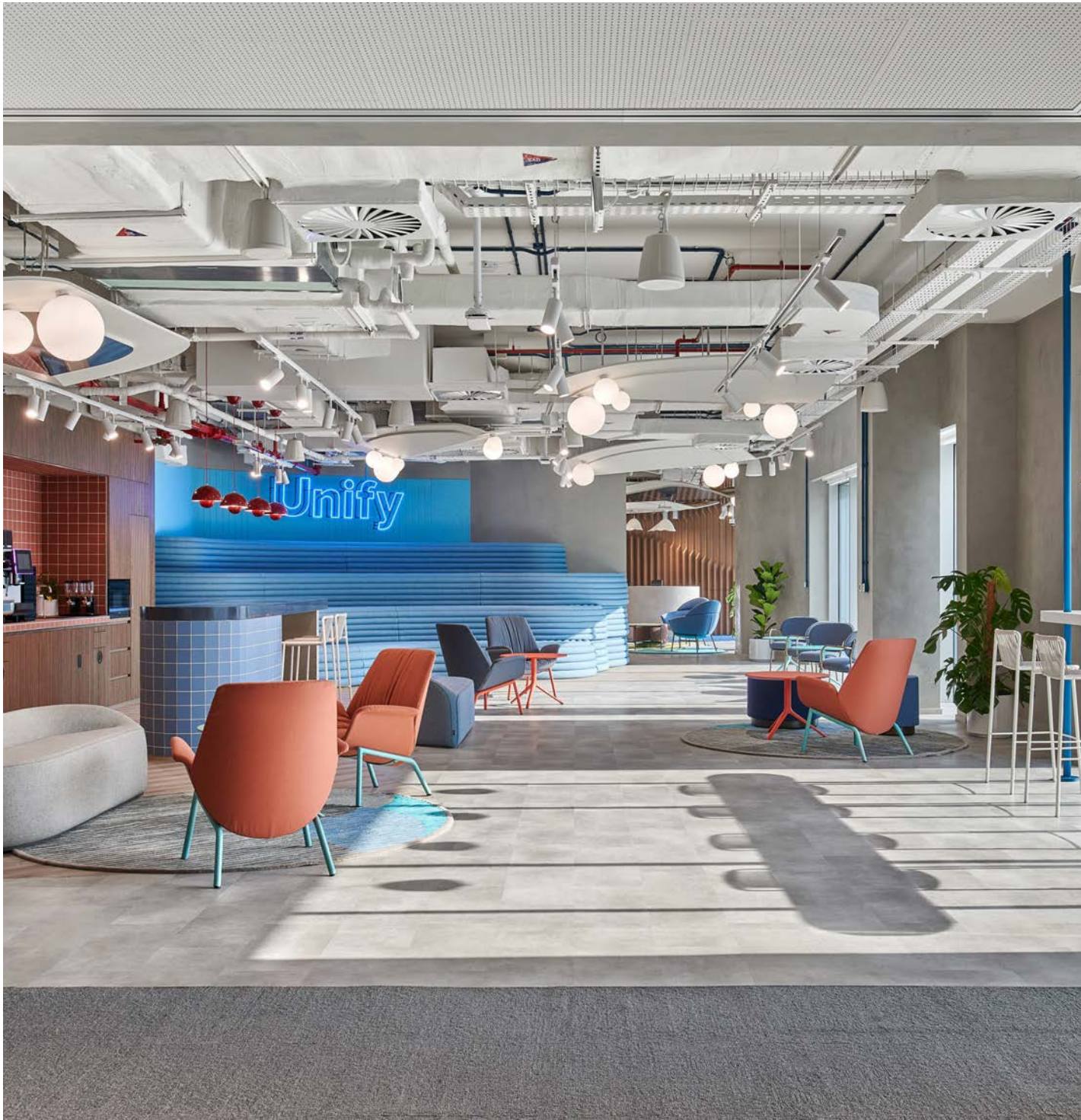
CLIENT TESTIMONIALS

Sprinklr

We are thrilled with the transformation of our Growth Markets hub. It has been a great pleasure working with Summertown and Roar to envision, design, and build a space that allows our team members to show up authentically, find diverse workspaces to create amazing work, and have meaningful interactions with each other. This office isn't just a workspace; it's a manifestation of Sprinklr's values, innovation hub, and commitment to sustainability. Achieving LEED Silver Certification underscores our global responsibility, as seen in the integration of industrial materials, acoustic solutions, and privacy options. Sprinklr's skyrocketing growth in Dubai and the Middle East is been a testament to why we chose this location in the region. Grateful to Summertown and Roar, we anticipate this space inspiring teams and contributing to Sprinklr's regional success.

Tony Vargas

Director, Global Workplace at Sprinklr



DMCC Headquarters

Uptown Tower embodies our organisation's ethos - a progressive and sustainable space epitomising our dedication to our team members. Collaborating with Summertown Interiors on the new DMCC headquarters was nothing short of exceptional: their unwavering dedication, depth of expertise, and collaborative spirit propelled the project forward, culminating in a breathtaking workspace that truly reflects our values

Paul Ashton

Executive Director, Property, DMCC



CLIENT TESTIMONIALS

Smart Dubai Office

We employed a team of experts from Design Worldwide Partnership (DWP) and Summertown Interiors to ensure our office adheres to international environmental standards. DWP and Summertown did an outstanding job and built a space that reflects our identity as a progressive smart organisation, as well as our mission to make Dubai the happiest city on the planet – starting with our own offices.

H.E. Dr Aisha Bint Butti Bin Bishr

Director-General



Etihad Airways

The level of commitment and technical expertise demonstrated by the Summertown team was excellent. I would highly recommend Summertown as a contractor for future projects.

Elias Kareem



CBRE

It feels good to work with a company that cares about their employees as much as they care about their Clients which provides us with a great quality service.

Yasmien Ibrahim

Project Manager



LinkedIn

Summertown were excellent to work with on our project from the initial Client Set up through to opening for First Day of Business. They also worked hard to ensure a team first approach was established and maintained; I think this helped promote a unified approach to problem solving from start to end and helped us deliver the project in a short timeframe on site, actively dealing with many global stakeholders. Summertown were also very committed to using technologies that helped us monitor the project from Europe and were always committed to best practice sustainability reporting. I'd have no hesitation recommending Summertown to other clients.

James Fee

LinkedIn EMEA Design + Build Lead

Mediclinic City Hospital

Over the years, I have used different contractors to carry out the work, however Summertown LLC have stood out as one of the best. They worked very well in ensuring the safety patients, staff and visitors.

Steven George

Engineering Manager





AFTER SALES SERVICE

Even when your project is finished we have a team to help.

Plus Works is our dedicated small works department that services small projects for loyal clients and Defects Liability Period (DLP) maintenance requests.

The Plus Works team provide fast professional service whilst ensuring attention to detail.



OUR SUSTAINABILITY STRATEGY

In 2019 we reviewed our sustainability strategy to guide our approach towards 2030. From this we set three JOURNEY2030 goals based on the areas where we believe we can have the most impact on key global sustainability challenges and UAE targets that underpin our sustainability strategy.



DELIVER 100% SUSTAINABLE PROJECTS

100% Summertown projects to meet externally accredited green/sustainability standards by 2030



SDG 11, SDG 13



ZERO WASTE

Zero waste to landfill from Summertown offices and projects by 2030



SDG 12



IMPROVE WORKPLACE HAPPINESS & WELLBEING

Continuously strive to be a great place to work



SDG 8

For more information on our sustainability strategy please [download](#) our latest annual Sustainability Report from our website.



Under our goal to **“Deliver 100% Sustainable Projects”** we will offer our clients **FREE** Leadership in Energy and Environmental Design **(LEED)** **certified level certification** for interior projects over 2,000sqm.



CONTACT US

Dubai Head Office

Summertown Interiors

PO Box 262807

Jebel Ali Free Zone

Dubai

United Arab Emirates

Tel: +971 4 805 3300

Abu Dhabi

Summertown Interiors

PO Box 43530

Abu Dhabi

United Arab Emirates

Tel: +971 2 665 2003



info@summertown.ae



www.summertown.ae



