



ESTABLISHED IN 1997

SUMMERTOWN INTERIORS

**COMPANY**

**PROFILE**

BUILDING A SUSTAINABLE FUTURE



## HELLO FROM NICOLA!

Welcome to Summertown Interiors.

For over 28 years, we've been delivering high-quality interior fit-out solutions across the UAE, partnering with some of the world's most respected Fortune 500 companies, government entities, and healthcare providers. Our experience spans a wide range of sectors, but our approach remains the same: to create functional, inspiring spaces that meet our clients' unique needs.

At the heart of our success is a commitment to excellence; on site, in design, and in client service and relationships. We are proud to be recognised not only for our technical expertise and attention to detail, but also for our ability to deliver on time, on budget, and to the highest quality standards.

Sustainability continues to play an important role in our work. Whether we're incorporating green building principles or working towards WELL and LEED certifications, we're dedicated to making choices that are better for both people and the environment in which we operate.

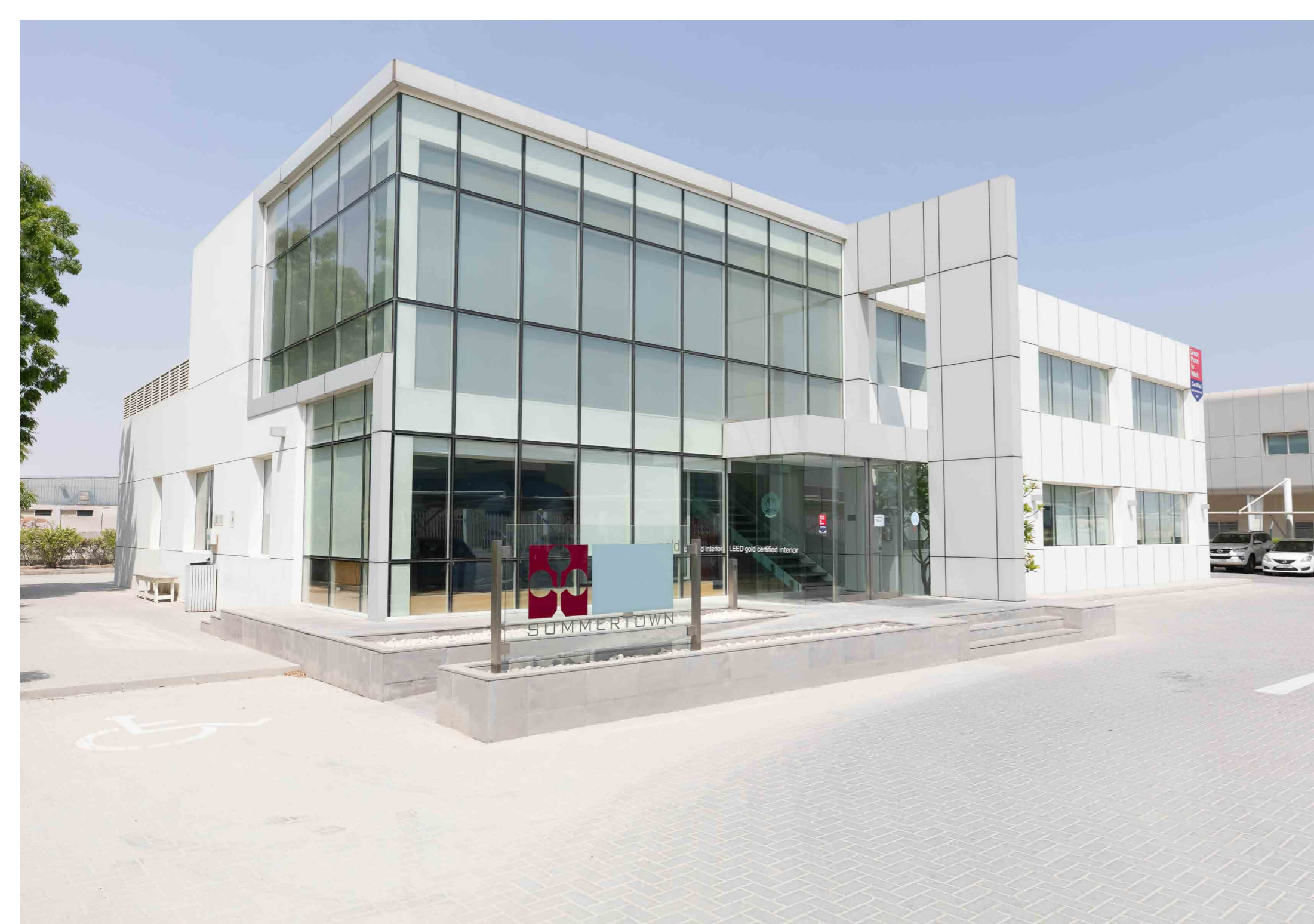
Thank you for taking the time to learn more about Summertown Interiors. We look forward to the opportunity to bring your next project to life.

*Nicola T.*  
Nicola Trivett  
General Manager

## TABLE OF CONTENTS

<b>05</b> About Us	<b>06</b> Our History
<b>09</b> Our Values	<b>10</b> Our Strength
<b>13</b> Our Capabilities	<b>14</b> Our Goal
<b>16</b> Our Accreditations	<b>17</b> Our Awards
<b>18</b> Our Clients	<b>20</b> Client Testimonials
<b>22</b> Our Projects	<b>84</b> Our Sustainability Strategy
<b>85</b> After Sales	<b>86</b> Contact Us





## ABOUT US

For 28 years, Sommertown Interiors has been a leading name in sustainable interior fit-out solutions in the UAE. We specialise in delivering high-quality commercial office and health care spaces for global Fortune 500 companies, government entities, and local businesses.

As pioneers in sustainability, Sommertown Interiors was the first fit-out contractor in the UAE to operate from a LEED Gold-certified workspace. We have also achieved LEED Gold certification for our existing building's operations and maintenance (LEED EBOM), reinforcing our commitment to environmentally responsible practices.

Our dedication to excellence is backed by internationally recognised certifications:

- ISO 9001:2015 Quality Management System certified
- ISO 45001:2018 Occupational Health and Safety Management Systems certified

With a strong focus on innovation, sustainability, and superior craftsmanship, we continue to create inspiring workspaces that enhance well-being and productivity.

# SUMMERTOWN INTERIORS THROUGH THE YEARS

**1997**

Established in Jebel Ali as wooden doors trading company

**2002**

Summertown Interiors established and activities extended to turnkey interior solutions provider

**2014**

Awarded '2014 CSR Engagement of the Year and 2014 Sustainable Business of the Year'

**2018**

Awarded 'Happiness at Work' Award

**2021**

WELL H&S Accreditation and Design Identity Highly Commended 'Interior Design - Fit-out' Award

**2023**

CID 'Interior Fit-out Project of the Year' winner for DMCC project

**2025**

Won 'Sustainable Fit-out Firm of the Year' and 'Highly Commended Project Manager of the Year' for Krystal Fernandez from CID

**2000**

Changed name to Summertown International and activities extended to fully fledged joinery production factory doors trading company

**2009**

Moved into our new LEED certified office

**2016**

Achieved Gold level LEED certification for Existing Buildings; Operations and Maintenance (LEED EBOM) for our headquarters. Our first Sustainability Report was released too

**2019**

Received 'NBC Sustainable Business Initiative' Award

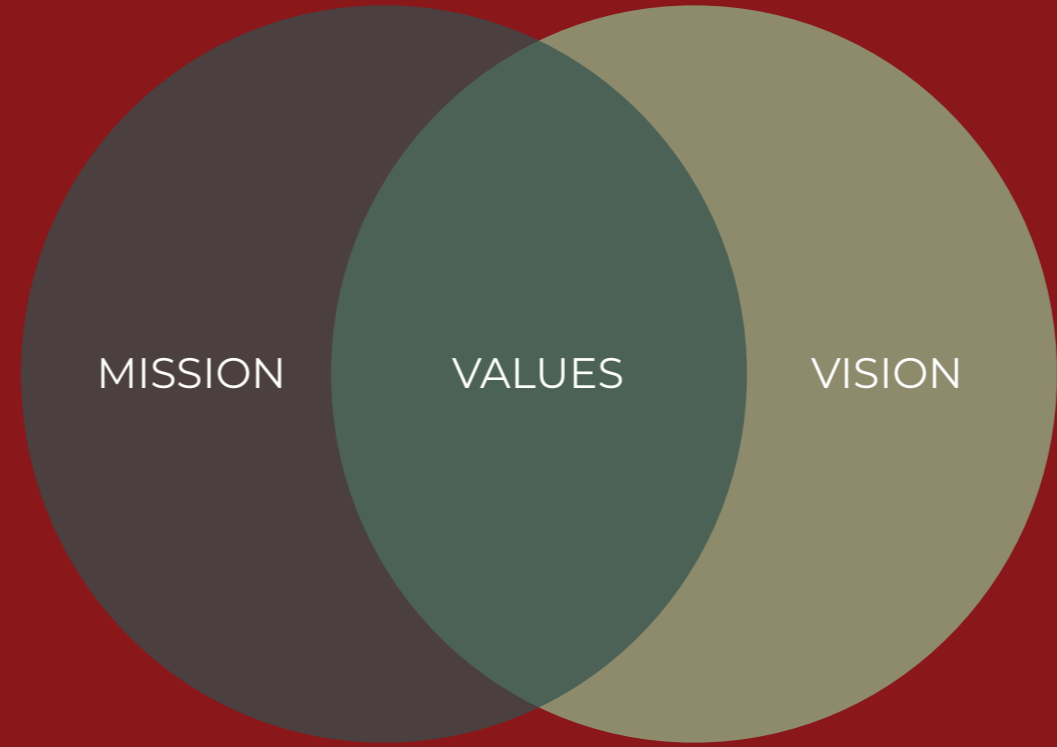
**2022**

CID Highly Commended 'Interior Fit-out Project of the Year' for SCMC and 25-year anniversary of SINT operation in the UAE

**2024**

SINT was awarded 'Great Place to Work'





## OUR MISSION

Our mission is to consistently deliver high end sustainable interior projects on time and within budget, which help clients:

- Achieve their environmental goals, improving energy, water and resource efficiency for buildings
- Create inspiring workplaces to enhance employee health and happiness
- Deliver operational savings, increasing building value and decrease utility costs

## OUR VALUES

- **Quality** - devotion and attention to consistency and detail
- **Socially Responsible Organisation** - employee friendly and implementing sustainable business practices
- Continuous improvement in everything we do, never being satisfied
- **Diversity** - opportunity to achieve based on merit. Equal job and career opportunities regardless of religion, race, gender, or nationality
- Effectiveness and efficiency - prioritising, and doing things well

## OUR VISION

Our vision is to build commercial interior spaces in an environmentally friendly and sustainable way.

# OUR STRENGTH

28 YEARS OF EXPERIENCE

28 YEARS

OFFER SUSTAINABLE SOLUTIONS



PRODUCT QUALITY



ON-TIME DELIVERY



PASSIONATE ABOUT WORK



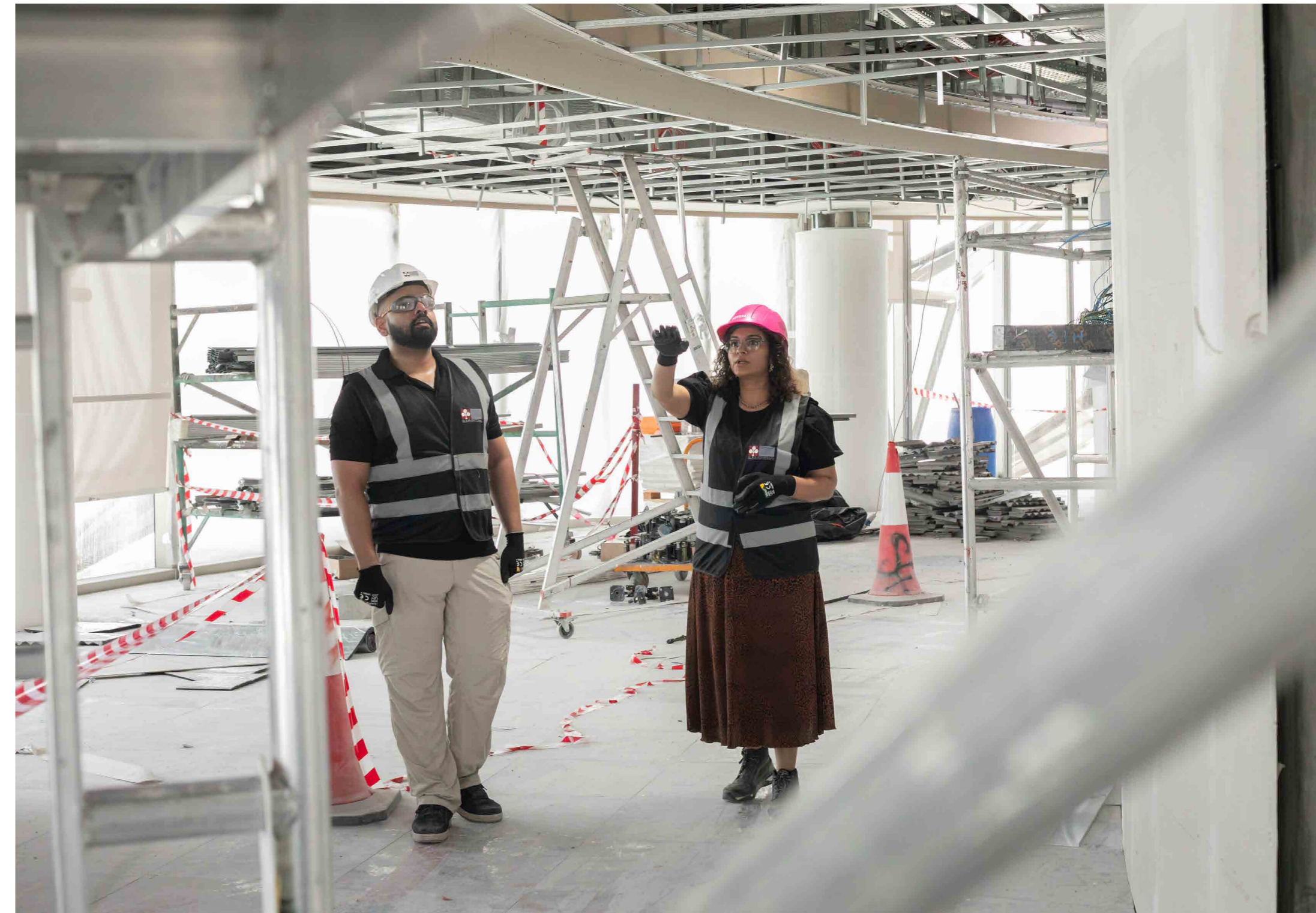
Our extensive hands-on experience with suppliers, consultants, materials, and documentation within the local market delivers significant value to our clients. This in-depth knowledge allows us to navigate processes efficiently, make informed decisions, and ensure smoother project delivery from start to finish.

We're leaders in creating spaces that are energy efficient, environmentally responsible, and designed to enhance the productivity and wellbeing of their occupants. Our approach integrates sustainable design principles with practical performance, ensuring long-term value for both people and the environment. As part of this commitment, we offer complimentary LEED certification for all interior projects over 2,000 sqm.

All projects are delivered in full compliance with internationally recognised management standards, including ISO 9001:2015 for Quality Management and ISO 45001:2018 for Occupational Health and Safety. These systems guide our processes at every stage, ensuring consistent quality, risk mitigation, and a safe working environment for all project stakeholders.

Our project programmes are carefully planned and fully mapped out by our Project Managers, taking into account all key milestones, dependencies, and critical activities. This structured approach allows us to proactively manage risks, coordinate stakeholders effectively, and ensure projects are delivered on time and to the highest standards.

Our problem solving mindset, combined with deep industry knowledge and proven expertise, enables us to tackle challenges head on and overcome obstacles efficiently. This proactive approach allows us to adapt quickly, find practical solutions, and keep projects moving forward without compromising on quality or outcomes.





COMMERCIAL



HEALTHCARE



F&B



EDUCATION

## OUR CAPABILITIES

- Sustainability and LEED specialists
- Industry specialists in Commercial, Education, F&B and Healthcare interior projects
- In-house labour workforce
- In-house MEP engineers and designers
- Fit-out and Design & Build services

Project delivery capabilities in the last 5 years

**18**

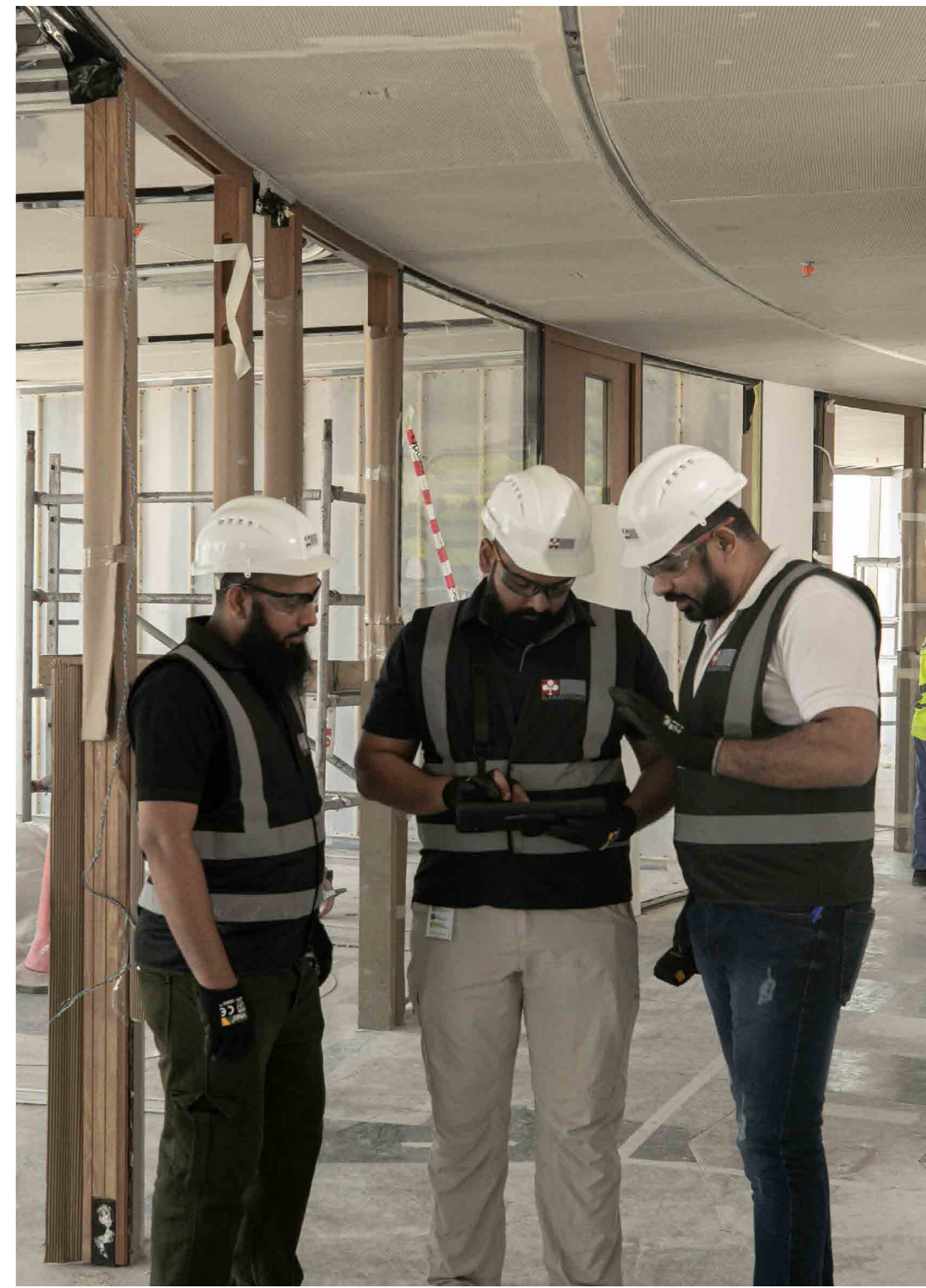
LEED-certified projects

**75+**

UAE commercial projects

**25+**

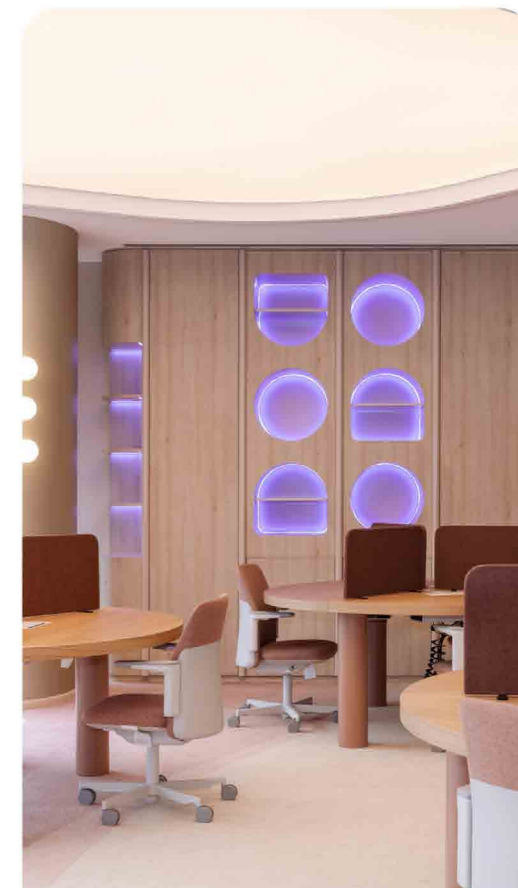
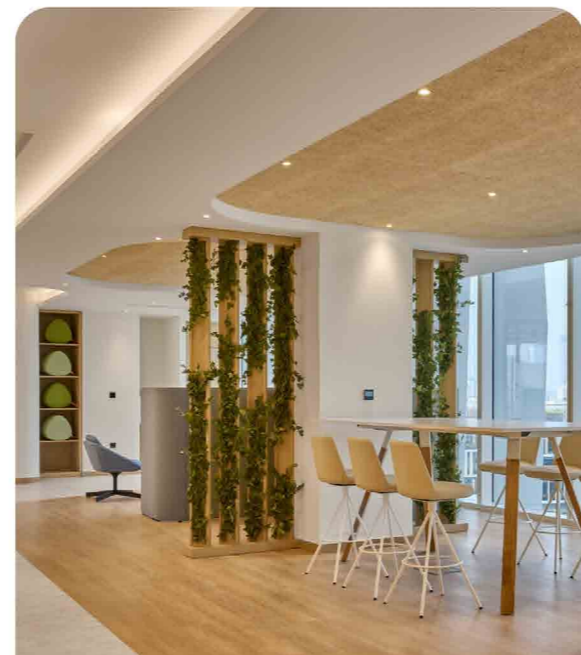
Repeat clients



## OUR GOAL

In line with our commitment to deliver **100% sustainable projects**, we are pleased to offer our clients complimentary Leadership in Energy and Environmental Design (LEED) certification at the appropriate certified level for interior projects exceeding 2,000 sqm.

This initiative reflects our dedication to embedding sustainability into every stage of our projects, helping clients achieve measurable environmental performance while creating healthier, more responsible spaces.



## OUR ACCREDITATIONS



### LEED

Summertown was the first UAE fit out contractor to be awarded Leadership in Energy and Environmental Design (LEED) Gold certification for the execution of its office interiors.



### WELL HEALTH-SAFETY RATED

Summertown earned the WELL Health-Safety Rating of its offices for the 5th year through the International WELL Building Institute (IWBI).



### LEED EBOM

In 2016 Summertown achieved Gold level LEED certification for Existing Buildings; Operations and Maintenance (LEED EBOM) for the ongoing operations and maintenance of it's headquarters.



### HEALTH & SAFETY

Summertown is certified under the new international ISO 45001:2018 Occupational Health and Safety (OH&S) management system.



### ISO 9001:2015

Summertown Interiors is certified under the ISO9001:2015 quality management system.



### GREAT PLACE TO WORK

We are a 'Great Place To Work' certified. Putting our company culture at the forefront is always our top priority

## OUR AWARDS

### HAPPINESS AT WORK

Best Workplace Sustainability Programme

### IDENTITY DESIGN AWARDS 2021

'Highly Commended' Abu Dhabi Early Childhood Authority Project

### COMMERCIAL INTERIOR AWARDS 2022

'Highly Commended' Supreme Council for Motherhood & Childhood Project

### COMMERCIAL INTERIOR AWARDS 2023

'Interior Fit-out Project of the Year' DMCC Uptown Tower

### GULF CAPITAL SME AWARDS

Sustainable Business of the Year

### DAMAN CORPORATE HEALTH AWARDS

CSR Engagement of the Year

### DUBAI CHAMBER

CSR Advanced Level

### NETHERLANDS BUSINESS COUNCIL

Sustainable Business Innovation Award

### SUSTAINABILITY INNOVATION AWARDS 2025

Sustainable Fit-out Firm of the Year

### COMMERCIAL INTERIOR DESIGN AWARDS 2025

'Highly Commended' Project Manager of the Year (Krystal)

### DESIGN MIDDLE EAST AWARDS 2025

'Sustainable Project of the Year' for Schneider Electric The Nest



# OUR CLIENTS



## OUR CLIENT TESTIMONIALS



**Don't take our word for it.  
Hear it from our partners.**

Summertown did an outstanding job and built a space that reflects our identity as a progressive smart organisation, as well as our mission to make Dubai the happiest city on the planet – starting with our own offices.

**H.E. Dr Aisha Bint Butti Bin Bishr**  
Smart Dubai

Summertown were very committed to using technologies that helped us monitor the project from Europe and were always committed to best practice sustainability reporting. I'd have no hesitation recommending Summertown to other clients.

**James Fee**  
LinkedIn EMEA Design + Build Lead

It feels good to work with a company that cares about their employees as much as they care about their clients which provides us with a great quality service.

**Yasmien Ibrahim**  
CBRE, Project Manager

Over the years, I have used different contractors to carry out the work, however Summertown LLC have stood out as one of the best. They worked very well in ensuring the safety patients, staff and visitors.

**Steven George**  
Mediclinic Hospitals, Engineering Manager

The level of technical expertise demonstrated by Summertown was excellent. I would highly recommend Summertown as a contractor for future projects.

**Elias Kareem**  
Etihad Airways, Project Manager

Collaborating with SINT was nothing short of exceptional! The unwavering dedication, depth of expertise, and collaborative spirit propelled the project forward, culminating in a breathtaking workspace that truly reflects our values.

**Paul Ashton**  
DMCC, Executive Director

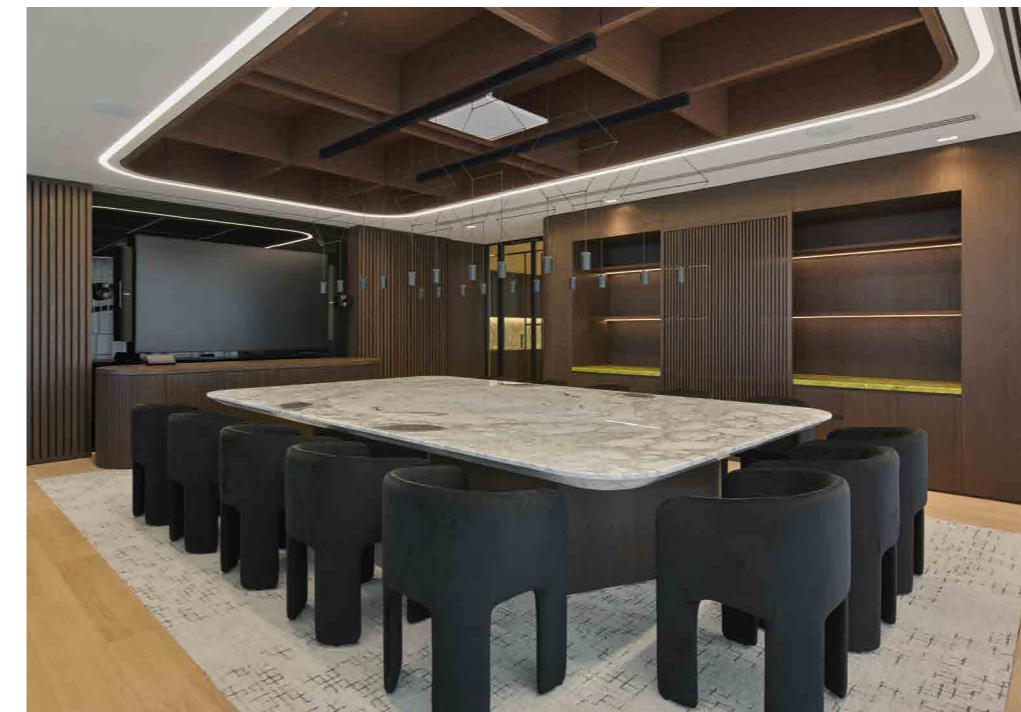


# OUR PROJECTS

We create workspaces that enhance well-being and productivity whilst meeting our client's sustainability goals.



COMMERCIAL PROJECTS



## SCHNEIDER ELECTRIC

Summertown Interiors is proud to be appointed as the preferred fit-out contractor for the refurbishment of Schneider Electric The Nest's ground and first floor offices in Dubai.

This turnkey project showcases our capability to deliver high-performance workspaces with a comprehensive scope that includes interior fit-out, bespoke furniture solutions, IT and AV systems for meeting rooms and townhalls, advanced security control systems, a fully equipped data centre, training centre, and their Innovation Hub.

As part of the works, our team also managed the supply, installation, and test and commissioning of all additional external HVAC units, ensuring seamless integration with the upgraded infrastructure.

This project reflects our commitment to delivering sustainable, technology-enabled environments that support innovation and collaboration.

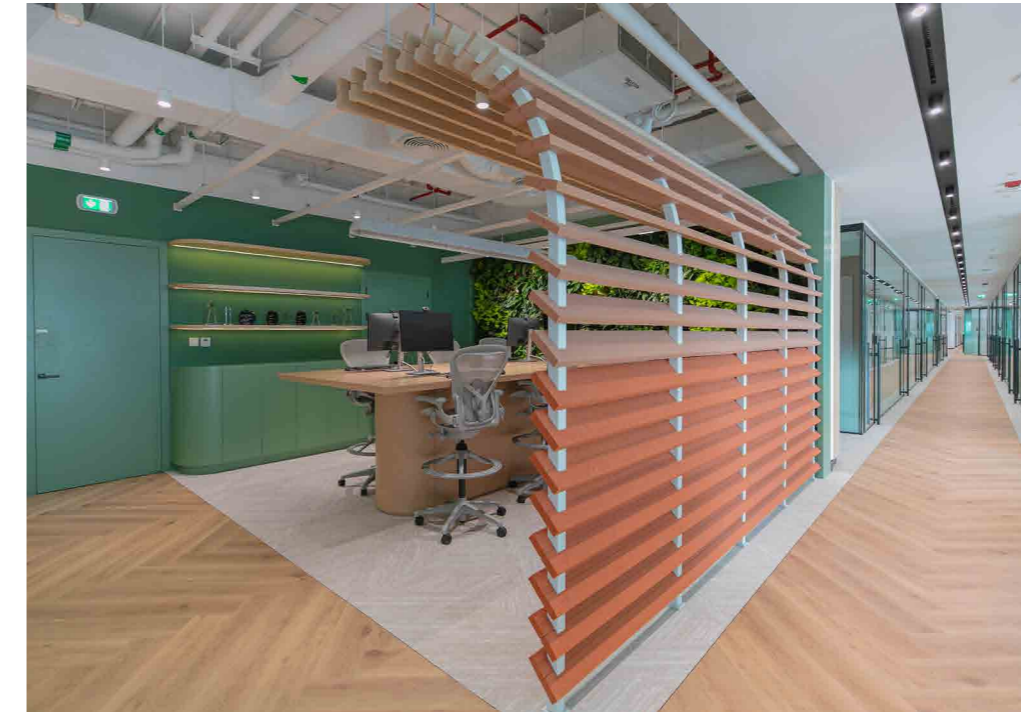
Size: 6,100 sqm

Location: Dubai, UAE

Sector: Commercial

Designer: Gensler

Certification: LEED Platinum & WELL Equity



## CONFIDENTIAL

We are proud to have completed another successful project for one of our valued repeat clients at their Dubai office located in the prestigious Burj Daman Building in DIFC.

Following the design direction by Say Studio and coordination of our colleagues at Savills who led the project and cost management, our team at Summertown was appointed to deliver the full interior fit-out, upgrading the Dubai office to reflect the refined and modern aesthetic of their Abu Dhabi office, which was also delivered by our team.

This comprehensive fit-out included the construction of bespoke meeting rooms, a welcoming reception area, collaborative breakout spaces, and detailed MEP works – all delivered to the highest standards of quality, functionality, and sustainability.

We are honoured to continue our partnership with our client, creating workspaces that inspire, support productivity, and reflect their global identity.

**Size:** 2,980 sqm

**Location:** Dubai, UAE

**Sector:** Commercial

**Designer:** SAY Studio



## DMCC HEADQUARTERS

The brief for the new DMCC Headquarters in Uptown Tower was to create a state-of-the-art workplace that fosters human connection and collaboration in line with the building's aim to be a LEED Gold certified building.

The new office interior spans across three floors of the stunning new Uptown Tower. Standing at 340 metres, it is the first tower in the new Uptown Dubai District, and houses 22 floors of premium Grade A commercial office space.

Delivered in partnership with Dubai-based interior design studio Roar, as Lead Design Consultants supported by Black & White Engineering, and real estate firm JLL, the new headquarters for DMCC is a collaborative workspace that embodies DMCC's ethos.

A central staircase, a first-of-its-kind and precedent-setting element within DMCC Uptown Tower, became the visual centrepiece symbolizing the essence of collaboration and connectivity throughout the workspace. This feature served as a testament to our commitment to pushing the boundaries of design and fit out.

Complementing the spectacular views of Dubai's cityscape, the new workspace has soft grey natural tones, punctuated by subtle colour accents in the loose furniture that add a touch of variation, natural marble and bespoke joinery.

**Size:** 4,000 sqm

**Location:** Dubai, UAE

**Sector:** Commercial

**Designer:** Roar



## DMCC UPTOWN TOWER LEVEL 9

Alongside our completion of the DMCC Headquarters, Summertown Interiors was entrusted with the task of crafting a cutting-edge workspace conducive to fostering human connections and collaborative efforts among support staff, all while adhering to the building's pursuit of LEED Gold certification.

Occupying Level 9 of the awe-inspiring Uptown Tower, conceptualised by architects Adrian Smith + Gordon Gill, this new office interiors stands as a testament to modernity and innovation. In collaboration with Dubai-based interior design studio Roar, serving as lead Design Consultants, their vision was to re-introduce the human element into the realm of commerce, thereby cultivating a workspace that exudes comfort and support.

Embracing a timeless palette of classic sophistication, the interior design harnesses the calming influence of the beige tones to create an ambiance of tranquility, while creamy hues contribute to an overall softness, inviting occupants to infuse their own personality and flair. The layout strategically integrates open workspaces, blending interactive and private areas seamlessly to empower employees to customise their environment according to their unique needs.

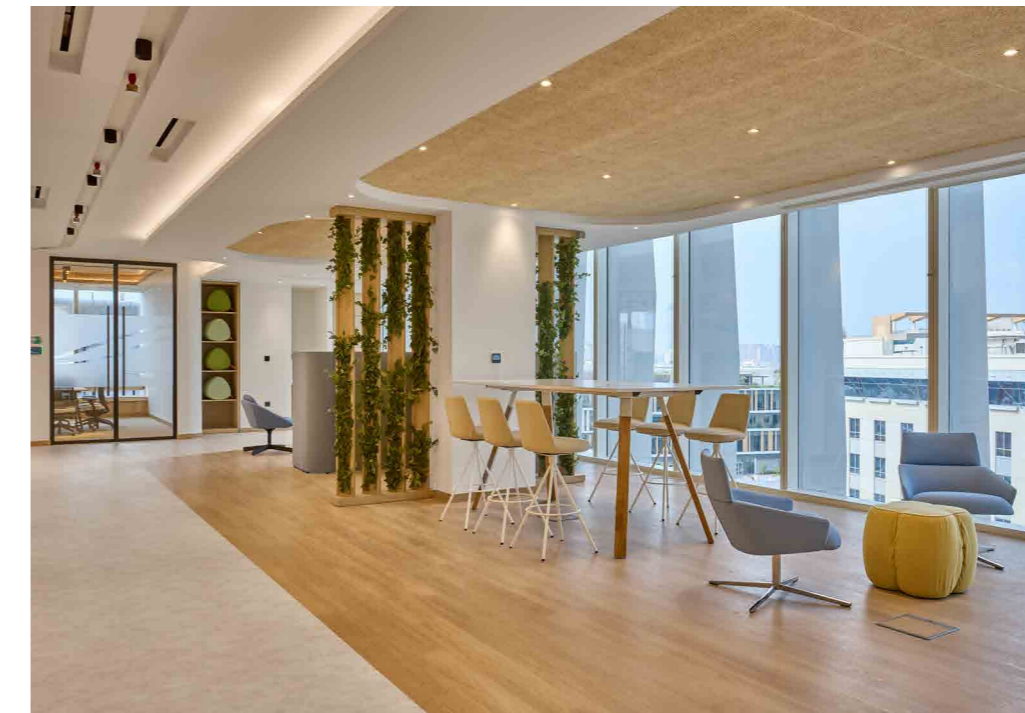
The meticulous attention to detail and unwavering commitment to craftsmanship culminated in a workspace that seamlessly merges sophistication with functionality, perfectly attuned to accommodate DMCC's distinct needs and preferences.

**Size:** 2,100 sqm

**Location:** Dubai, UAE

**Sector:** Commercial

**Designer:** Roar



## CONFIDENTIAL

We are honoured to have been appointed as the trusted fit-out contractor for a confidential client's new 1,200 sqm workspace, located on the 6th floor of Gate Village Building 07 in DIFC.

Delivered in collaboration with CBRE, who led project and cost management, alongside SAY Studio as the design consultant and WWMEP as the MEP consultant, the project was meticulously executed to create a sophisticated, high-performing workplace tailored to modern business needs.

Designed to global standards while thoughtfully integrating local insights, the workspace is guided by principles of transparency, sustainability, and innovation. Open, light-filled spaces encourage collaboration and trust, while integrated greenery reflects growth, stability, and interconnectedness. The overall atmosphere promotes dynamic thinking, balancing a global outlook with respect for local culture and identity.

The workplace features a carefully curated blend of functionality and refined aesthetics, including state-of-the-art meeting rooms, collaborative zones, a spacious breakout area, phone booths and private pods, dynamic open-plan workspaces, and elegantly designed private offices.

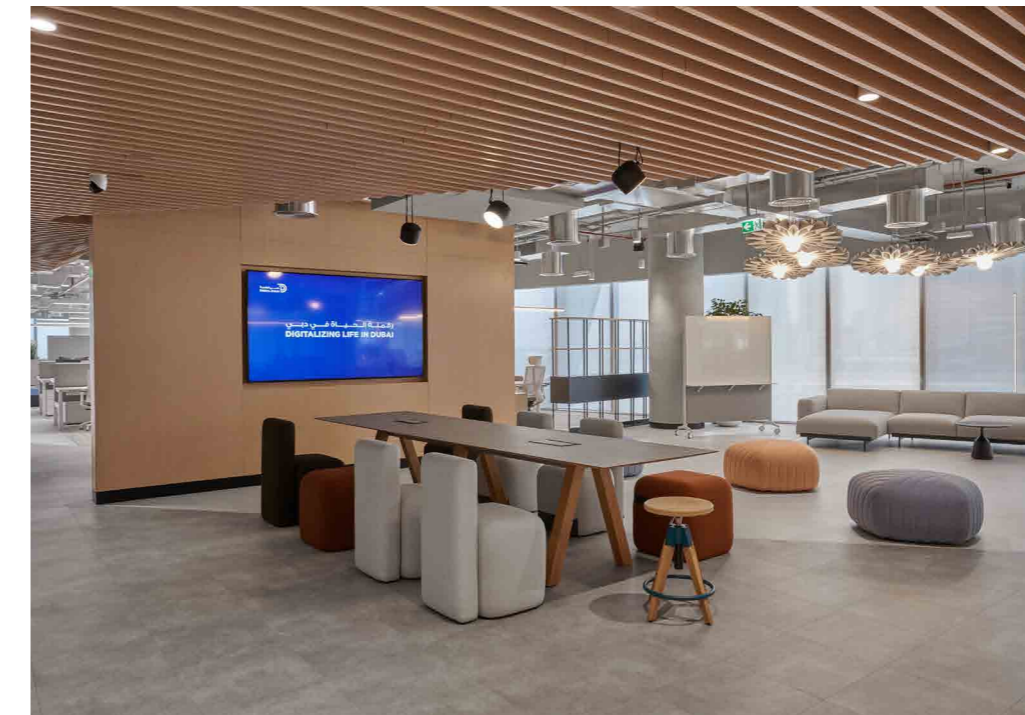
As a champion of sustainable design, Summertown Interiors is proud to support the project's pursuit of LEED Gold certification, reinforcing our commitment to delivering environmentally responsible, future-ready workspaces.

**Size:** 1,200 sqm

**Location:** Dubai, UAE

**Sector:** Commercial

**Designer:** SAY Studio



## DIGITAL DUBAI HEADQUARTERS

Digital Dubai Authority was established by His Highness Sheikh Mohammed Bin Rashid Al Maktoum, Vice-President & Prime Minister of the UAE, and Ruler of Dubai in June 2021 to develop and oversee the implementation of policies and strategies that govern all matters related to Dubai's information technology, data, digital transformation, and cyber-security.

Summertown delivered the 2,100 sqm office fit out project in partnership with Bluehaus Group's design team and project managers from Glead Gulf across two floors, Level 1A & 2A in Building 1 in D3 (Dubai Design District) which is in addition to the other existing floors 7,9,10,11 & 12 that belongs to Digital Dubai Authority and continues to reflect the core values of the business whilst showcasing an innovative and technology driven interior.

The new fit out incorporates several formal and informal meeting and multi-functional spaces, open plan work stations and focused work spaces, encompassing high quality fixtures and materials and utilizes leading technology for a seamless work environment.

Summertown with its expertise in green projects, is proud to support Digital Dubai Authority to obtain LEED Silver certification for this project.

**Size:** 2,100 sqm

**Location:** Dubai, UAE

**Sector:** Commercial

**Designer:** Bluehaus Group

**Certification:** LEED Silver



## SALESFORCE

Salesforce, an American cloud-based software company headquartered in San Francisco, California, specialises in customer relationship management (CRM) software and applications for sales, customer service, marketing automation, e-commerce, analytics, and application development.

Summertown collaborated with the Bluehaus Group's design team to deliver the 1,000 sqm commercial office space, with Turner and Townsend providing project management, cost consultancy and Sustainability services.

The new fit-out features a blend of formal and informal meeting areas, multifunctional spaces, open-plan workstations, focused work zones, phone booths, and a social lounge. It incorporates quality fixtures and materials while integrating advanced technology for a seamless work environment.

The overall design reflects Salesforce's core branding, consistent with their global office standards. Summertown, leveraging its expertise in sustainable projects, is proud to support Salesforce in pursuing LEED Gold certification for this project.

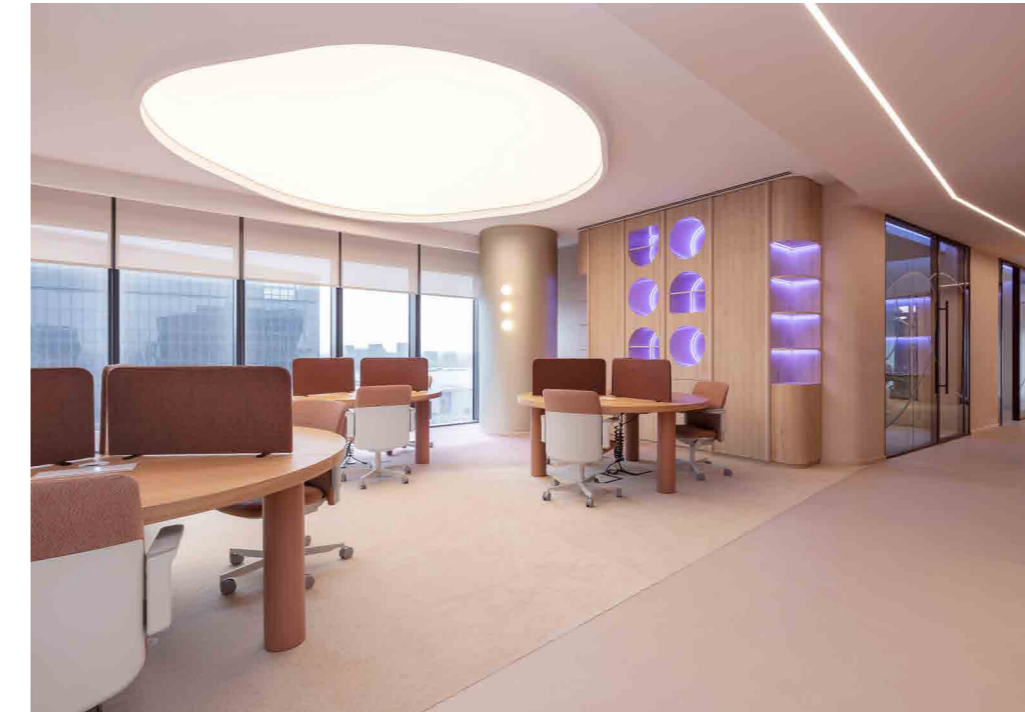
**Size:** 1,000 sqm

**Location:** Dubai, UAE

**Sector:** Commercial

**Designer:** Bluehaus Group

**Certification:** LEED Gold



## ANALOG

Located in Yas Creative Hub, the fit-out is a perfect blend of human-centric design and innovation, creating a workplace that fosters creativity, collaboration, and productivity. Every detail reflects Analog's inventive spirit, shaping an environment that is both dynamic and inspiring.

A defining element of the design is the use of soft white and skin-tone hues, enhancing spatial perception and creating a warm, adaptable atmosphere.

These tones evoke a sense of serenity and timeless elegance, ensuring the space remains contemporary yet enduring. Carefully structured to maximise efficiency, the work space is divided into distinct zones that seamlessly balance functionality, aesthetics, and well-being.

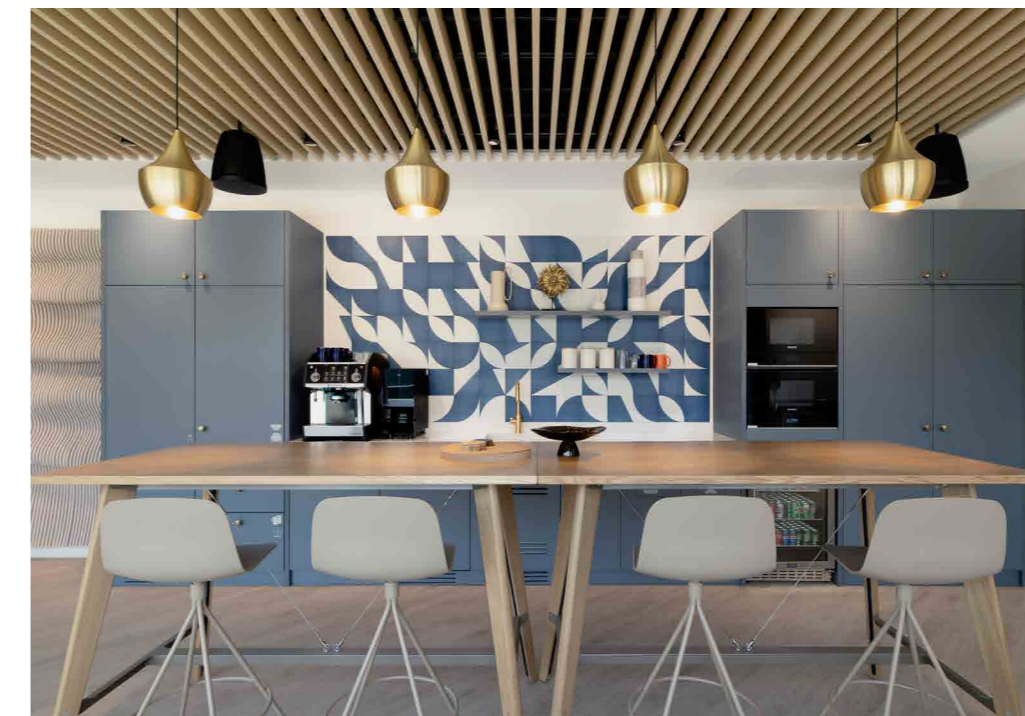
This thoughtful design approach transforms the office into more than just a place to work, it becomes an experience that inspires, engages, and evolves with its occupants.

**Size:** 910 sqm

**Location:** Abu Dhabi, UAE

**Sector:** Commercial

**Designer:** Roar



## EQUINIX

We are honored to have been chosen as the trusted fit-out contractor for the refurbishment of Equinix's existing office in International Media Production Zone, Dubai. This project is a testament to our commitment to delivering high-quality, sustainable, and innovative workplace solutions that align with our clients' evolving needs.

In collaboration with Turner & Townsend, who led the project management, and Royal Haskoning DHV, the design consultants, we have meticulously transformed the office into a sophisticated and high-performing workplace.

The newly refurbished space features a carefully curated combination of functional and aesthetically pleasing elements, including state-of-the-art meeting rooms, acoustically optimised hush rooms, a cutting-edge control room, a welcoming client pantry, dynamic open-plan work areas, and elegantly designed private offices.

By integrating premium materials, high-quality fixtures, and advanced technology, we have created a workspace that not only meets the operational demands of today but also supports future growth and innovation.

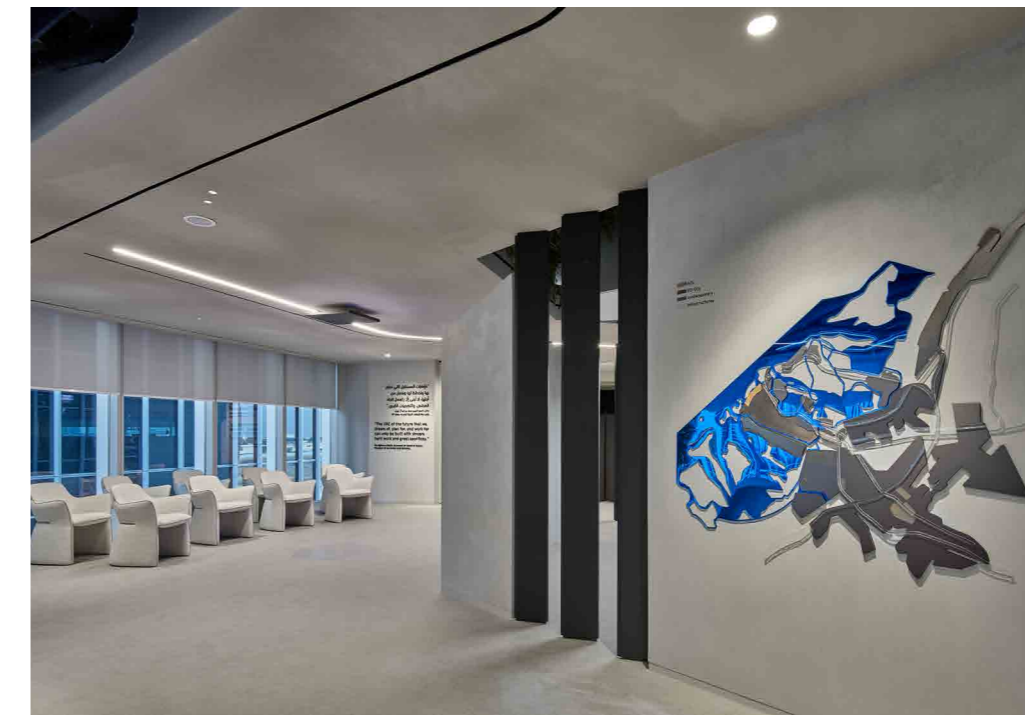
We are incredibly proud of this transformation and look forward to seeing Equinix thrive in their newly upgraded office space.

**Size:** 530 sqm

**Location:** Dubai, UAE

**Sector:** Commercial

**Designer:** Royal Haskoning DHV



## DEPARTMENT OF FINANCE LEVEL 4

The Department of Finance (DoF) was established in 1962, it plays a fundamental role in providing the Abu Dhabi government entities with the best-in-class financial services and specialised solutions as well as managing available resources efficiently.

Summertown Interiors was proud to be chosen as the fit-out contractor for a renovation & upgrade works for their existing Headquarters located at ADIB HQ Building, Tower 2 in Al Muntazah Abu Dhabi.

This project was executed in close collaboration with Roar for the design and Vedra, which provided project management and cost consultancy with Infinity MEP+S Consultants as the MEP consultant.

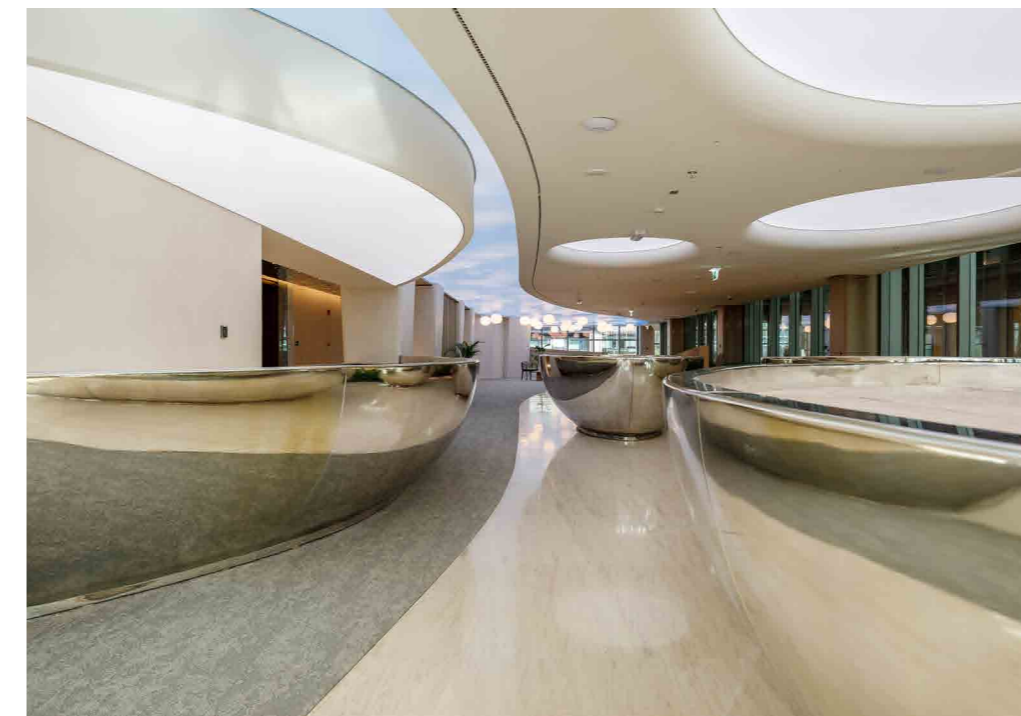
The new workspace consists of a new Legacy Experience Area of which includes a new reception and interactive areas. High-quality fixtures and materials, combined with advanced technology, create an efficient and inspiring work environment.

Size: 370sqm

Location: Abu Dhabi, UAE

Sector: Commercial

Designer: Roar



## ORA DEVELOPERS

ORA is a leading name in the field of designing and developing luxury lifestyle destinations in unique locations, bringing world class expertise, exceptional attention to detail and visionary ideas to every landmark project they work on.

Summertown worked in partnership with the design team at DWP to deliver the fit out of the 1,100 sqm commercial office space. The project aimed for a traditional fit-out in line with DWP's vision, creating a functional space with ergonomic furniture and smart office solutions.

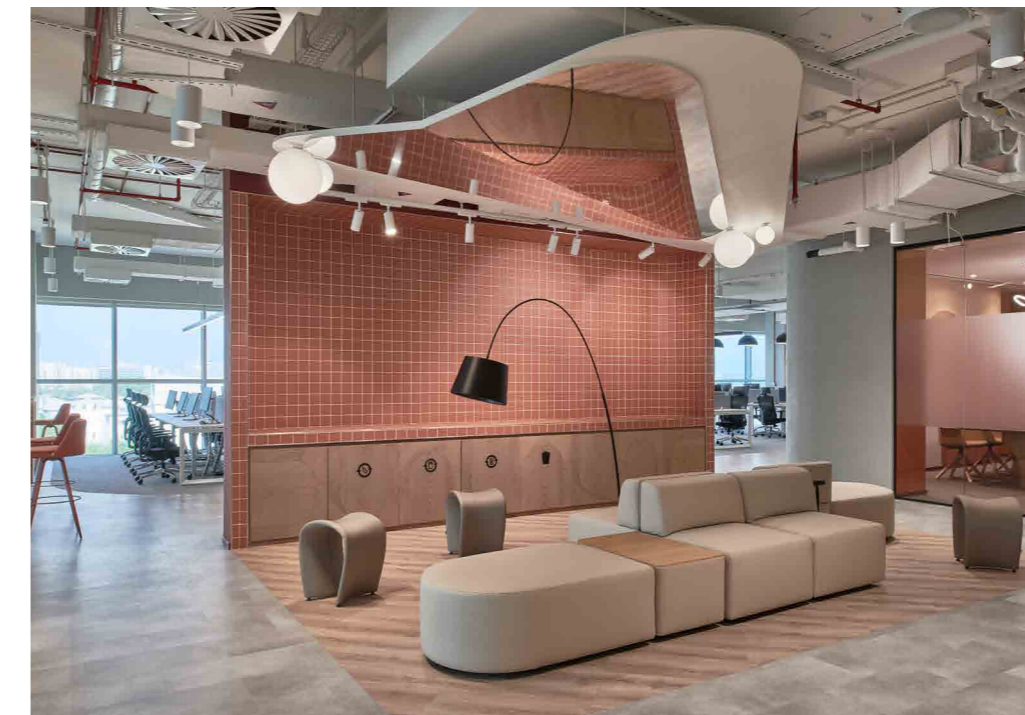
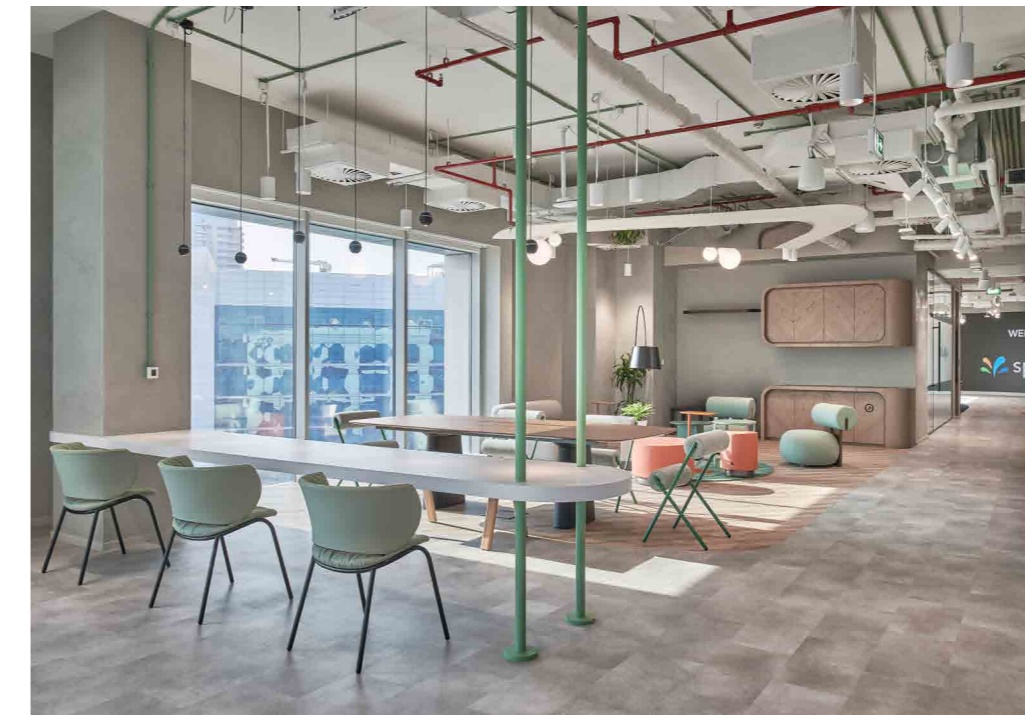
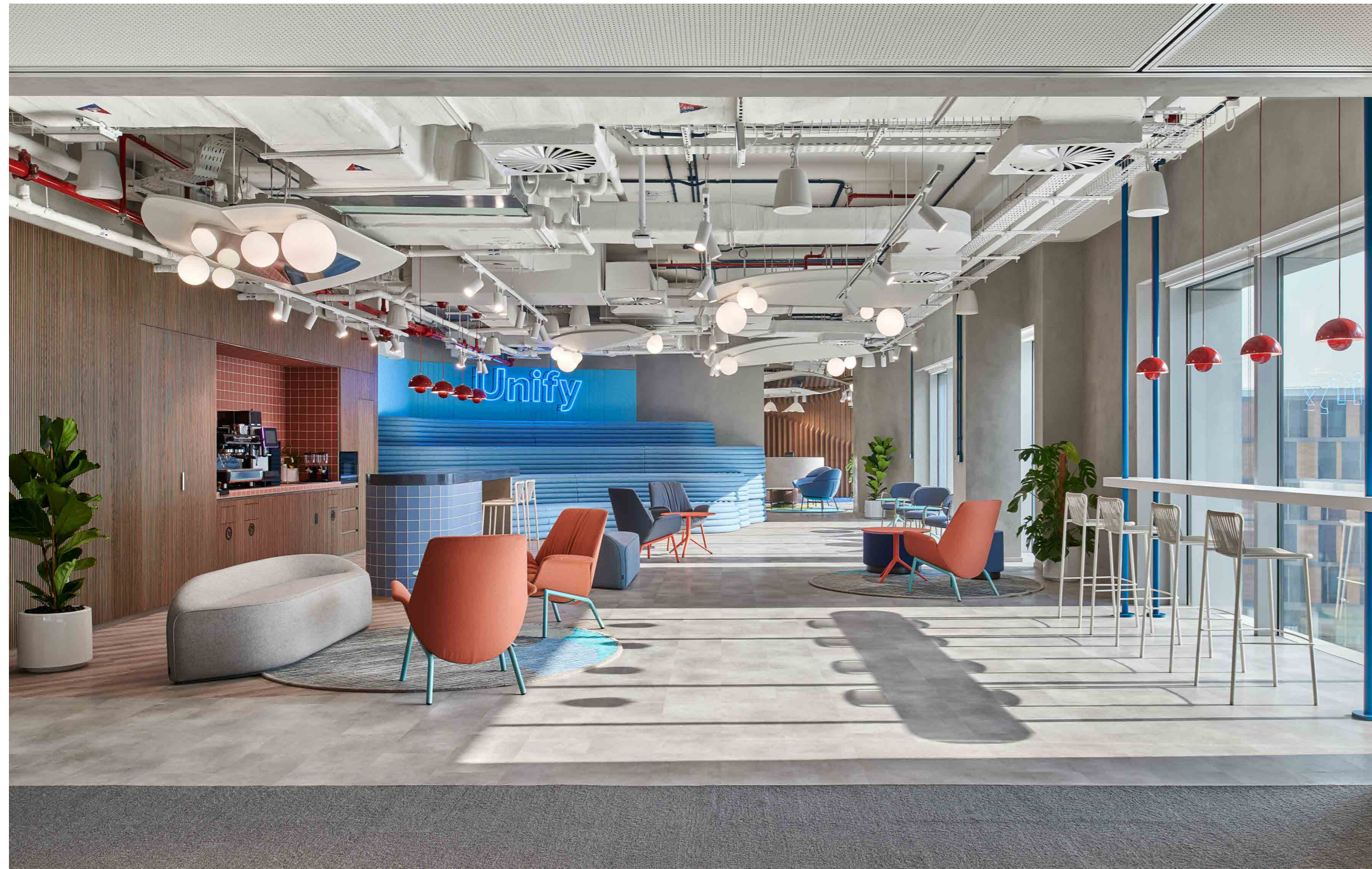
Key elements include biophilic design, emphasizing a connection with nature, a balanced approach with open and closed rooms, a CEO Suite blending comfort and aesthetics, a terrace panorama offering Dubai landmark views, and a focus on community through collaborative design, fostering a strong sense of community within the workspace.

Size: 1,100 sqm

Location: Dubai, UAE

Sector: Commercial

Designer: DWP



## SPRINKLR

Sprinklr is an American software company with its headquarters based in New York City. Sprinklr develops SAAS customer experience management (CXM) platform combining different applications for social media marketing, social advertising, content management, collaboration, employee advocacy, customer care, social media research, and social media monitoring.

Summertown worked closely with design firm Roar to deliver the fit out of this stunning commercial office in the heart of Dubai Internet City.

The project scope was to design and build the entire office floor space on Level 5 of Injaz Building in line with the requirements of Sprinklr to create a space to suit the client's needs for a flexible and evolving space for their business to thrive.

The space incorporates a combination of informal and formal intersections of flexible collaborations, huddle and presentation spaces with playful acoustic solutions, privacy options and the use of industrial materials.

**Size:** 2,000 sqm

**Location:** Dubai, UAE

**Sector:** Commercial

**Designer:** Roar

**Certification:** LEED Silver



## OQ TRADING

Summertown worked in close collaboration with leading design firm AAID, and Project Management firm CSQ, to deliver this sustainable project in line with Leadership in Energy & Design (LEED) standards.

The brief was to demolish and refurbish OQ Trading existing office floor and fit out a new additional workspace on the below floor spanning a total of 2,325sqm.

A stunning design inspired from the Movement of Energy, with nature reflecting various dynamic environments and landscapes; from Sunrise to Sunset, the transformational power of the earth's elements creating the environment we live and thrive in.

The double floor workspace encompasses, an inviting reception, boardroom, meeting rooms, workstations, bespoke work and wellness areas including a café, majilis, recreation area and gym.

**Size:** 2,325 sqm

**Location:** Dubai, UAE

**Sector:** Commercial

**Designer:** AAID

**Certification:** LEED Silver



## LINKEDIN HEADQUARTERS

The brief was to revitalise LinkedIn's Middle East & North Africa Headquarters with a complete refurbishment across 2 floors that would meet LEED (Leadership in Energy and Environmental and Design) and WELL Gold Certification.

Working in close collaboration with Dubai-based designers, SAY studio, CBRE Project Management, and Cundall the fit out was both challenging and rewarding with the variety of flexible workspaces, creative design elements and bespoke joinery incorporated into the design.

To ensure the LinkedIn project team were abreast of progress during the fit out we used our Matterport 3D scanning technology, which enabled their European team view progress virtually without travelling to Dubai.

Key highlights of the new sustainable workplace include the flexible collaborative working spaces, dedicated media recording room, a café, micro-kitchen co-working space, mother's room, multifunctional training room, and games room.

Size: 1,600 sqm

Location: Dubai, UAE

Sector: Commercial

Designer: SAY Studio



## SUPREME COUNCIL FOR MOTHERHOOD AND CHILDHOOD

This three-level design and build project was delivered in close collaboration with Dubai-based interior design studio, Roar. The design pays homage to the UAE's cultural heritage, which was achieved with creative elements such as design structures that nod to the local desert landscape.

Each area of the SCMC workspace has been curated to have its own breath of life and create a sense of exploration for users, with a new experience in each space. For example, the ground floor has been designed to mimic the idea of a traditional outdoor courtyard, with the use of arches and biophilia. From the auditorium to the training rooms and offices etc., the journey continues with unique geometric shapes and structures on all three floors.

In line with the UAE government's sustainability focus, Summertown ensured the project was completed in line with the stringent Abu Dhabi Green Building Estidama Pearl 2 Building Rating System, which SCMC is expected to be awarded in the coming months.

**Size:** 3,500 sqm

**Location:** Abu Dhabi, UAE

**Sector:** Commercial

**Designer:** Roar

**Certification:** Abu Dhabi Green Building Estidama Pearl 2 Building Rating System



## ASPRIS WELLBEING CENTRE

Aspris Wellbeing Centre Dubai is a new state-of-art healthcare centre established by the Priory Group - one of the most distinguished independent providers of mental healthcare from the UK.

Located in City Walk, the fit out brief for the wellbeing centre was to create a friendly, welcoming, modern environment for patients starting their journey to recovery.

Having successfully delivered the fit out for the Priory Aspris Wellbeing Centre in Abu Dhabi, we were very familiar with ambience required, and again work in close collaboration with PMK Consult to create this healthcare space that was initially divided into two shells and core unit.

The overall space ambience of calm & tranquility was achieved by the color palette & materials with consistent use of light color tones, soft fabric textures & warm wood. The identity of the space is developed throughout the centre by controlled lighting that complements the wood & wallpaper textures, with the aim to provide an optimal environment for medical & mental health treatment.

Upon entry patients are welcomed with a custom-made branded feature wall in the reception, & feature shelving that provides privacy between two proximate areas. The tailored specialist treatment rooms provide comfortable spaces for private consultations, & individual therapy & treatment.

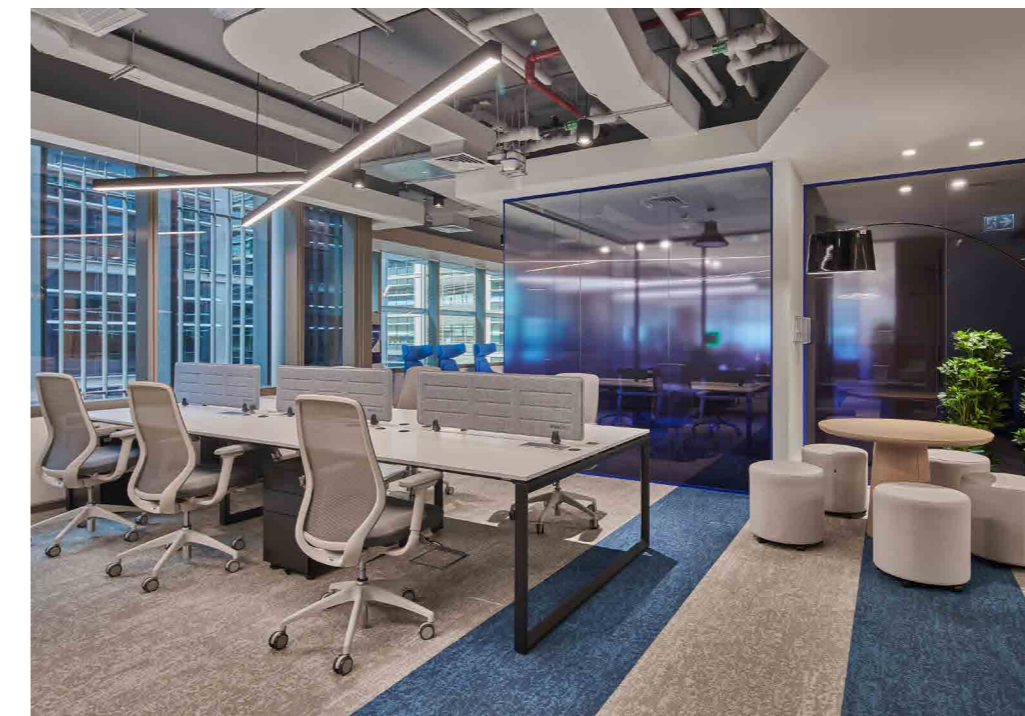
Additionally, a playful children's waiting area & consultation rooms purposely designed to cater for the treatment of children.

**Size:** 510 sqm

**Location:** Dubai, UAE

**Sector:** Healthcare

**Designer:** SWAP architects



## EMIRATES DEVELOPMENT BANK

Emirates Development Bank (EDB) is a UAE government owned bank established to support the UAE's economic diversification agenda, with specific focus on small and medium enterprises (SME)s.

In line with EDB's commitment to business banking, EDB's brief for their new business banking center located in One Central, on Sheikh Zayed Road in the Dubai World Trade Centre, was to create a welcoming environment for clients that was also a smart workplace.

The design and build of EDB's new workplace was delivered in close collaboration with leading Dubai-based design studio, Roar. Roar's design integrated EDB's iconic sail logo, inspired by the 'Sail' found in traditional dhows, their vibrant blue brand colour, and a material palette of terrazzo, metal, acoustic felts, glass and marble.

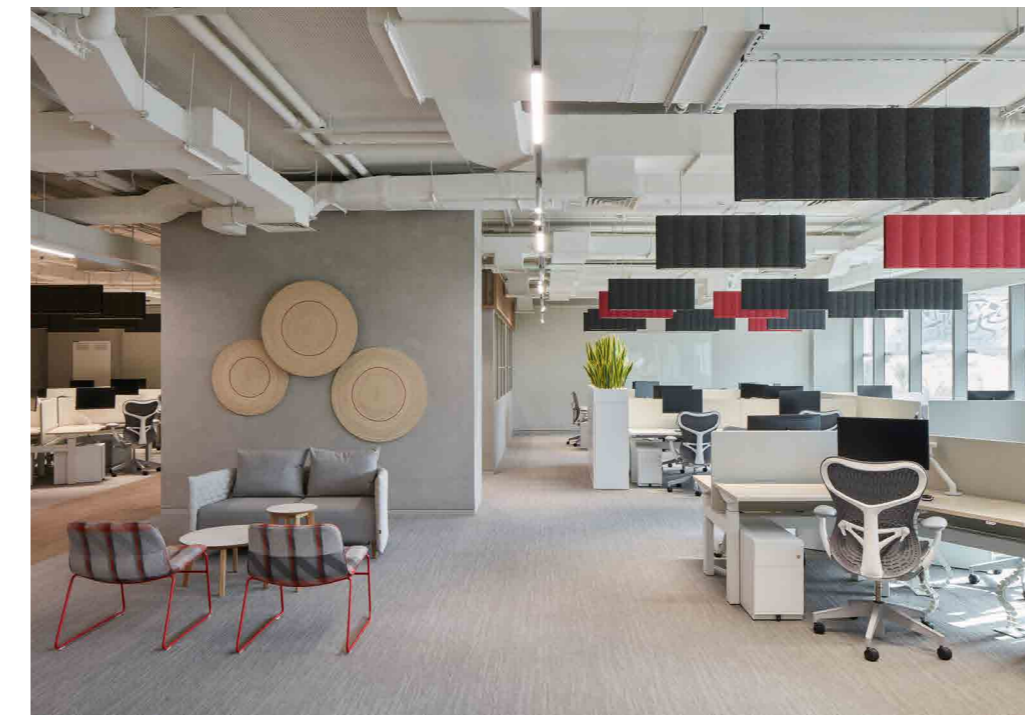
The new business banking centre incorporates both client and employee zones. Upon entry is the modern reception area, adjacent is the café style pantry. Further functional spaces include smart meeting rooms with the latest AV and conferencing technology, open workstations, and a boardroom.

**Size:** 930 sqm

**Location:** Dubai, UAE

**Sector:** Commercial

**Designer:** Roar



## TAKEDA

The new LEED certified Middle East headquarters for Japanese pharmaceutical company, Takeda, is a stunning contemporary office with a blend of traditional Japanese design philosophy with modern mathematical efficiency that is anchored in local culture. Located in the prestigious One Central Development in the Central Business District of Dubai World Trade Centre Authority, Summertown delivered the 'design and build' office project in partnership with Dubai-based interior design firm Roar, and CBRE project management.

During the construction phase, the project team established environment friendly strategies for construction waste management, segregating the waste and sending it for recycling/reusing/ composting to reduce the carbon footprint of the project. The project achieved LEED Silver certification.

Biophilia and natural materials including wood and raw exposed concrete are key to the workspace design alongside the subtle inclusion of the corporate philosophy it calls "Takeda-ism" based on four values: integrity, fairness, honesty and perseverance. Highlights of the workspace include the boardroom inspired by a Japanese tea house, and reception modelled on the 'genkan' entrance hallway concept of a traditional Japanese home.

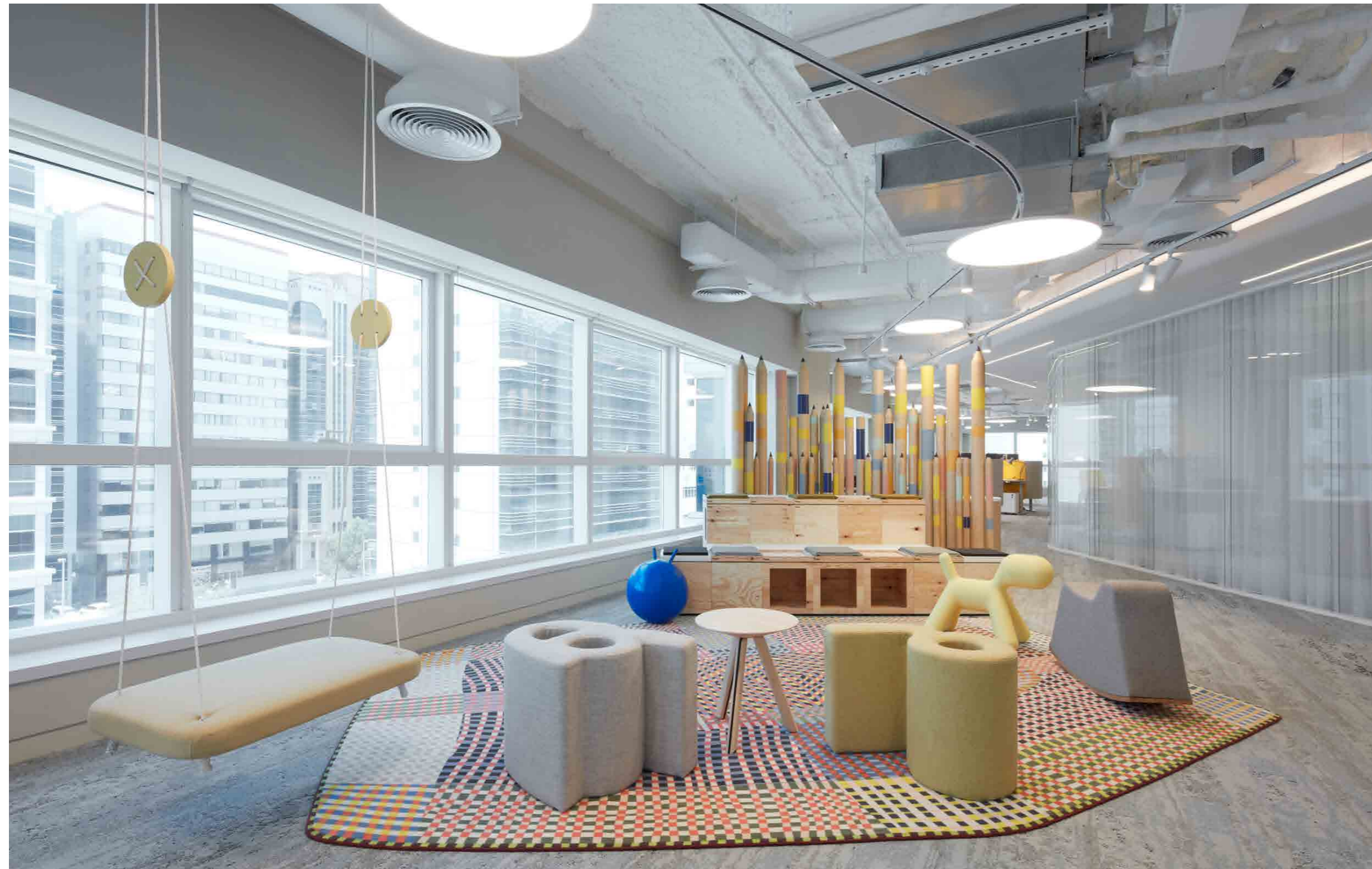
**Size:** 2,075 sqm

**Location:** Dubai, UAE

**Sector:** Commercial

**Designer:** Roar

**Certification:** LEED Silver



## ABU DHABI EARLY CHILDHOOD AUTHORITY

Summertown Interiors was appointed by ECA to translate Roar Studio's vibrant cutting-edge design, into a workspace for 100 education experts that are shaping the future of pre-schoolers in Abu Dhabi.

The entrance lobby welcomes guests with a life-size friendly monster 'Big Blue' and an array of playful, vibrant and tactile joinery features, which sets the tone for the rest of the space. Flowing walkways connect a variety of bespoke hubs such as workstations, naturally lit meeting rooms, a children's playroom and purpose-built maternity room.

The ECA fit-out project is an amalgamation of a hybrid workspace and child-centric educational play area, which means that every space is unique and appropriated to its user.

Every room is completely different in its shape and aesthetic, from floor material to colours, custom-made fixtures and bespoke furniture pieces. Additional elements include the use of soft and tactile textures throughout and bio-folding walls to create flexible meeting spaces for either one large or two small rooms.

**Size:** 1,865 sqm

**Location:** Abu Dhabi, UAE

**Sector:** Commercial

**Designer:** Roar

**Certification:** LEED Silver



## DIFC INNOVATION HUB

Dubai International Financial Centre's (DIFC) aspiration for the Innovation Hub, was to provide contemporary offices that characterise campus style workspaces conducive to an environment of collaboration, activity-based working with fantastic amenities -including a public auditorium for sharing ideas and knowledge, and social connection areas in the heart of DIFC.

DIFC Innovation Hub serves as the definitive destination for nurturing the next unicorns from the region, while helping build a strong FinTech sector and create new jobs for talented professionals.

The scope of the design and build project was to design and fit out existing shell and core spaces into flexible office suites, effectively a 'plug and play' option for companies; and design and build the public auditorium and connection zones.

The project was challenging and complex as it evolved and increased in scope during the build.

Summertown collaborated with several design partners, including Roar, and Say Studio, to design and fit out in total 22 office suites plus the social collaboration areas and public auditorium.

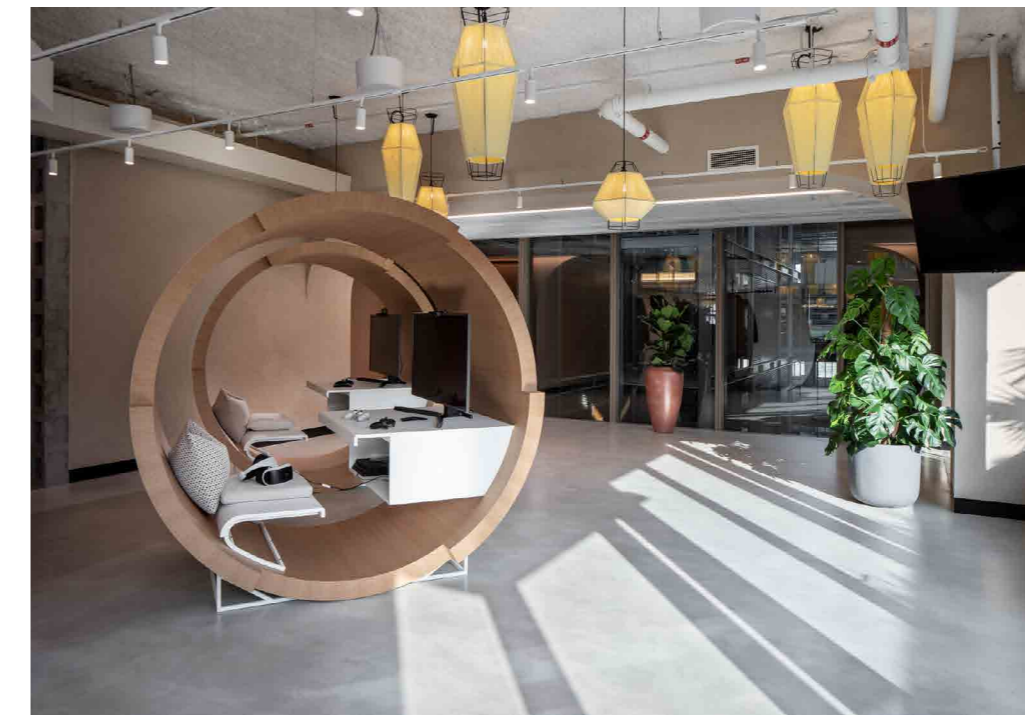
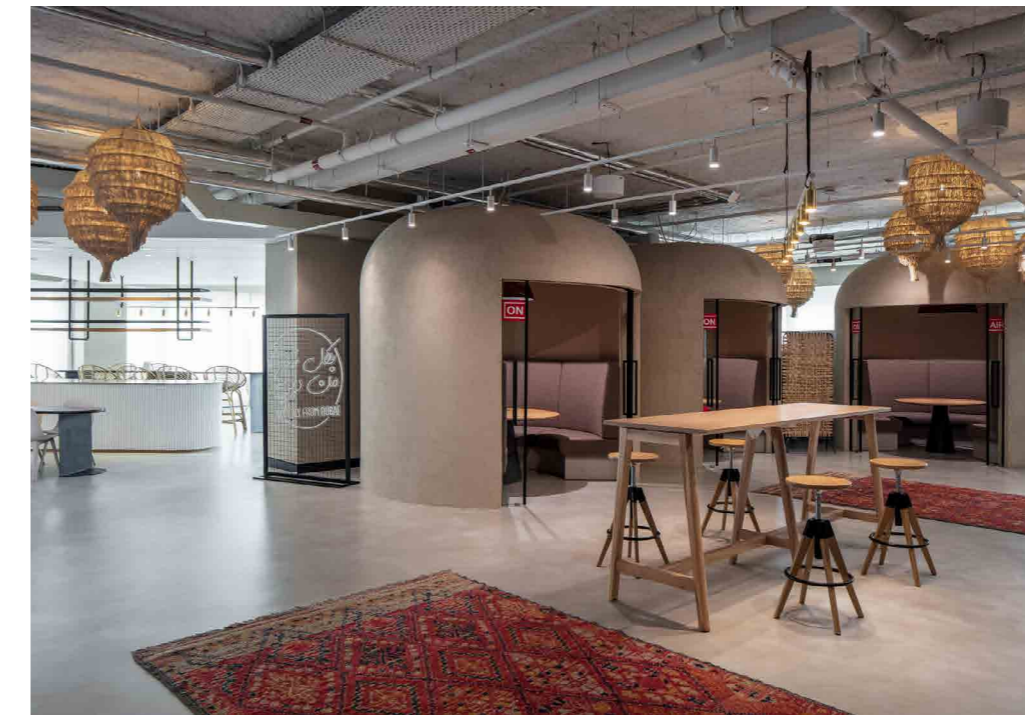
**Size:** 3,500 sqm

**Location:** Dubai, UAE

**Sector:** Commercial

**Designer:** Roar, SAY Studio, Summertown Interiors

**Certification:** LEED Silver



## GOVERNMENT OF DUBAI MEDIA OFFICE

The Government of Dubai Media Office (GDMO) required a new Dubai Headquarters which also encompassed the Dubai Press and Members Club.

The new headquarter location is the prestigious One Central Development in the Central Business District of Dubai World Trade Centre Authority (DWTCA). Summertown delivered the 4,200 sqm office fit out project in partnership with Bluehaus Group's design team and project managers from 3Sixty Consult.

Inspired by the concept 'Castle in the Sand', the office reflects GDMO's vision to create a space that 'feels like home', combining a blend of nostalgia and modernity.

The open-plan workspace features free-flowing desk areas to encourage team collaboration and transparency, sound-proof state-of-the-art meeting rooms, as well as welcoming Majlis that is a modern expression of the traditional Arabic hospitality concept.

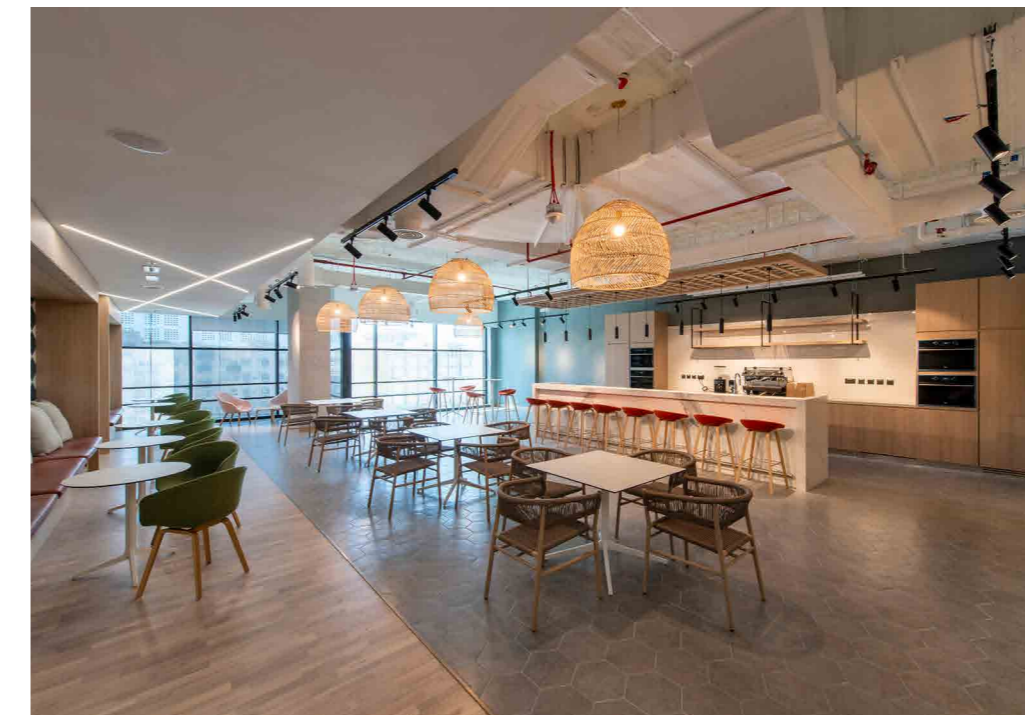
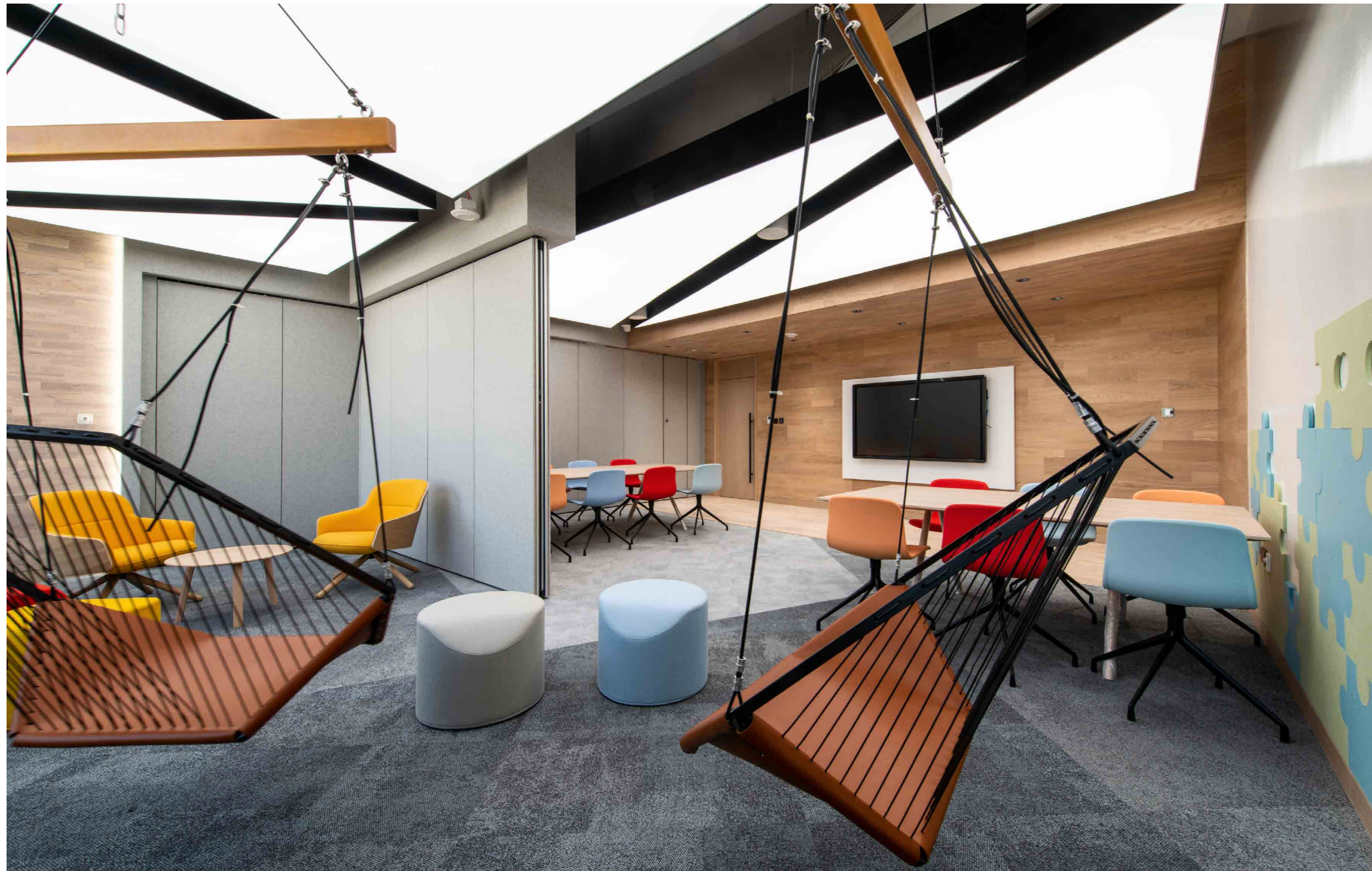
Designed to facilitate productivity and provide access to the latest media equipment and technology the office incorporates a Master Control Room (MCR), Central Apparatus Room (CAR), and several recording, editing and voice over booths with acoustic treatments for sound proofing and absorption. Biophilic design elements and plants feature throughout the space including an indoor 'Contemplation Garden' and outdoor terrace garden.

**Size:** 4,200 sqm

**Location:** Dubai, UAE

**Sector:** Commercial

**Designer:** Bluehaus Group



## DEPARTMENT OF FINANCE DUBAI

The scope of the works entailed the demolition of the existing office and new fit out in line with LEED green building criteria. It is expected that the project will reach the client's goal of LEED Gold certification.

Summertown Interiors collaborated closely with designers DWP on the fit out of this UAE government office to achieve the high specification finishes specified in the design.

The office space consists of several unique team collaboration meeting zones, large open plan desk areas, strategically placed quiet zones, boardroom, a spacious majlis, and a variety of meeting rooms.

Highlights of this office include the wooden joinery featured in the boardroom with bespoke marble table, and stylish pantry with striking marble bench.

One of the fit out challenges of this design was the large wooden beams overarching the open meeting zones, but well worth the effort in keeping true to the design.

**Size:** 5,500 sqm

**Location:** Dubai, UAE

**Sector:** Commercial

**Designer:** DWP Design

**Certification:** LEED Gold



## SALAMA BINT HAMDAN AL NAHYAN FOUNDATION

Designed by Bluehaus Group, the stylish modern industrial design workplace incorporates a library, reception, meeting rooms and collaboration areas.

Summertown undertook the full interior fit out of SHF's new office located on the ground and mezzanine level of the Al Mamoura Building in Abu Dhabi.

A highlight of the design is the biophilia walls and the artwork curated by SHF.

The Salama bint Hamdan Al Nahyan Foundation (SHF) who's mission is "to invest in the future of the United Arab Emirates by investing in its people" develops and supports strategic initiatives in the areas of Art, Culture and Heritage; Early Childhood Development; and Health.

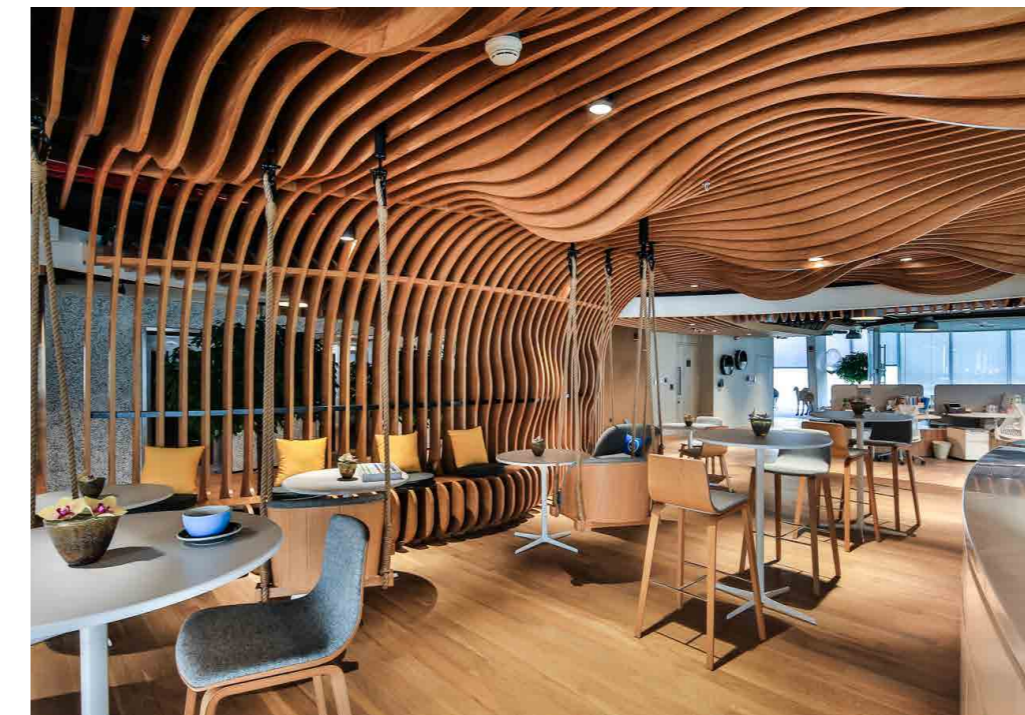
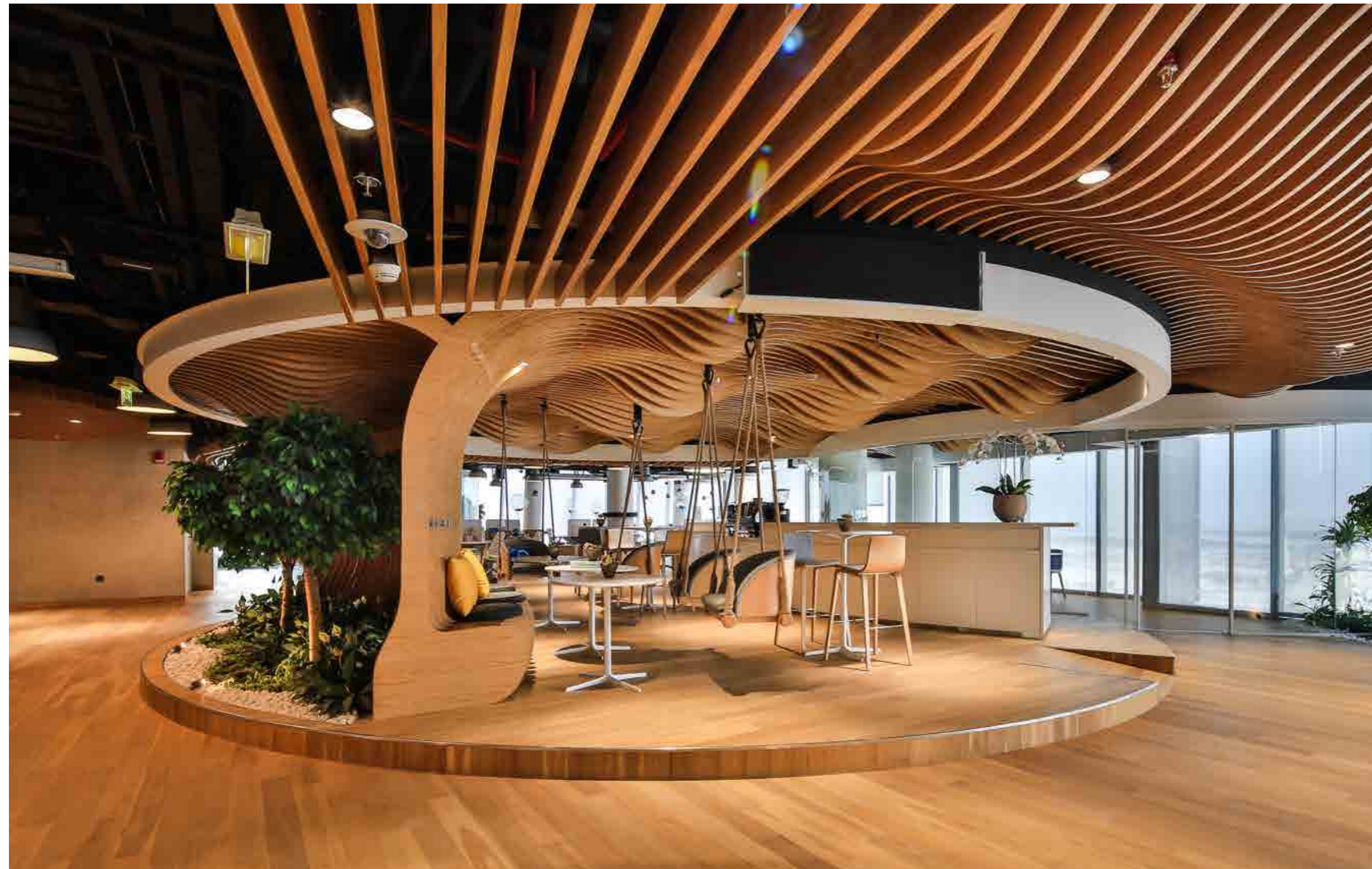
Established in 2010, the SHF is the family foundation of Her Highness Sheikha Salama bint Hamdan Al Nahyan.

Size: 700 sqm

Location: Abu Dhabi, UAE

Sector: Commercial

Designer: Bluehaus Group



## SMART DUBAI

Summertown Interiors collaborated very closely with designers DWP on the delivery of the Smart Dubai office that utilises leading technology for a seamless work environment.

Summertown with its expertise in green projects, also managed the LEED certification process for this project and reached the client's goal of LEED Gold certification

The office space features a 'Virtual Reception' and many working spaces utilising different materials and fixtures, including a café, auditorium, majlis, quiet zones, lab and meeting rooms. These spaces include writable walls, a live feed LED in the café, and modern designed furniture.

Each area features the highest quality fit out materials and finishes, demonstrating Summertown's process driven approach, craftsmanship and attention to detail during the fit out.

Despite the complexity of the joinery, technology (AV & IT), and a set opening date, the 14 week timeline was met with a fast track program.

**Size:** 1,850 sqm

**Location:** Dubai, UAE

**Sector:** Commercial

**Designer:** DWP Group

**Certification:** LEED Gold

FOOD & BEVERAGE PROJECTS

**Ch**  
They're a  
secure lit  
**very**



## TIMES SQUARE CENTRE

'Picnic Square' is Dubai's new family-focused dining destination at Times Square Centre (TSC), Sheikh Zayed Road, Dubai. Summertown collaborated closely with Times Square Centre management team to deliver the 2,330 sqm sustainable design and build project, handing over the vibrant new dining space in November 2021, ready for their new food and beverage partners to move in.

Setting a new standard for shopping mall open plan dining areas, Picnic Square's contemporary design features natural materials, the integration of biophilic elements such as plants and greenery, and a variety of high-quality seating options and areas. Family-friendly seating zones including stylish 'private pods' for mothers to feed their babies in privacy complement the functional open plan design.

In line with TSC's sustainability focus, Summertown applied sustainable building practices whilst building the project and is aiming to achieve Leadership in Energy and Environmental Design (LEED) certification for the new artisan food dining area.

**Size:** 2,330 sqm

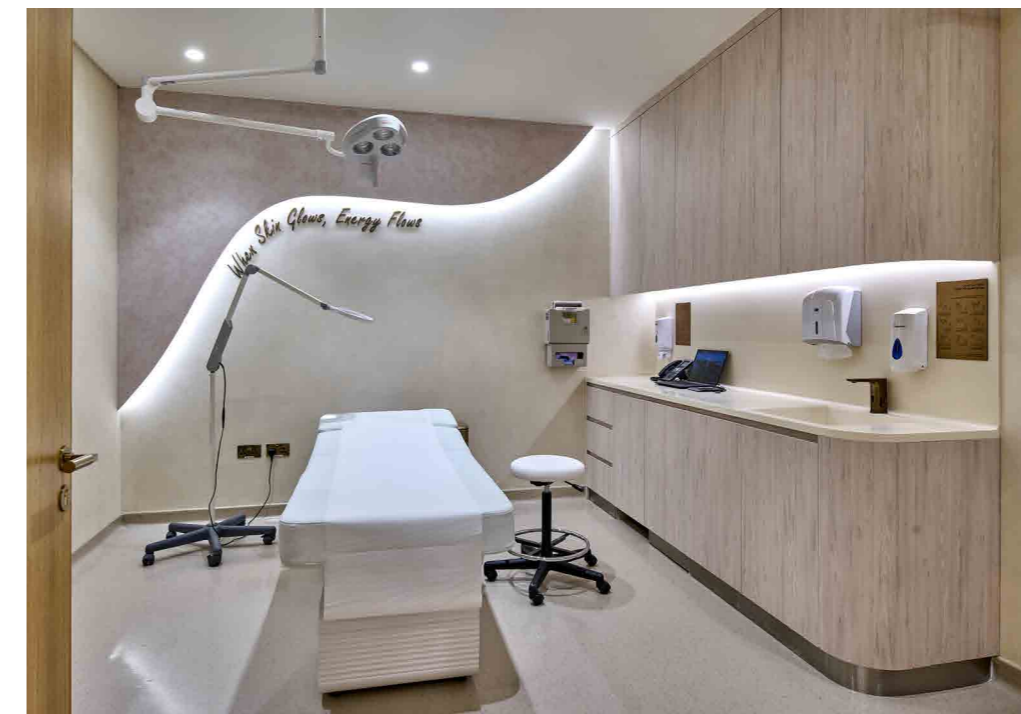
**Location:** Dubai, UAE

**Sector:** Food & Beverage

**Certification:** LEED Certified



HEALTHCARE PROJECT



## MEDICLINIC DERMATOLOGY

Summertown Interiors is proud to have been awarded the design and build contract for the new Dermatology Clinic at Mediclinic Airport Road, Abu Dhabi.

This 300m<sup>2</sup> state-of-the-art facility has been meticulously designed to create a soothing and welcoming environment, enhancing both patient experience and staff efficiency. A space designed for comfort and functionality.

Our expert team has crafted an interior that balances modern aesthetics with functional excellence. The clinic's design incorporates a stylish and contemporary reception area that offers a welcoming first impression. Specialised consultation rooms, including facial and laser treatment rooms, tailored to meet the clinic's advanced dermatological services. A palette of soft, neutral tones, fostering a calm and tranquil atmosphere that prioritises patient comfort.

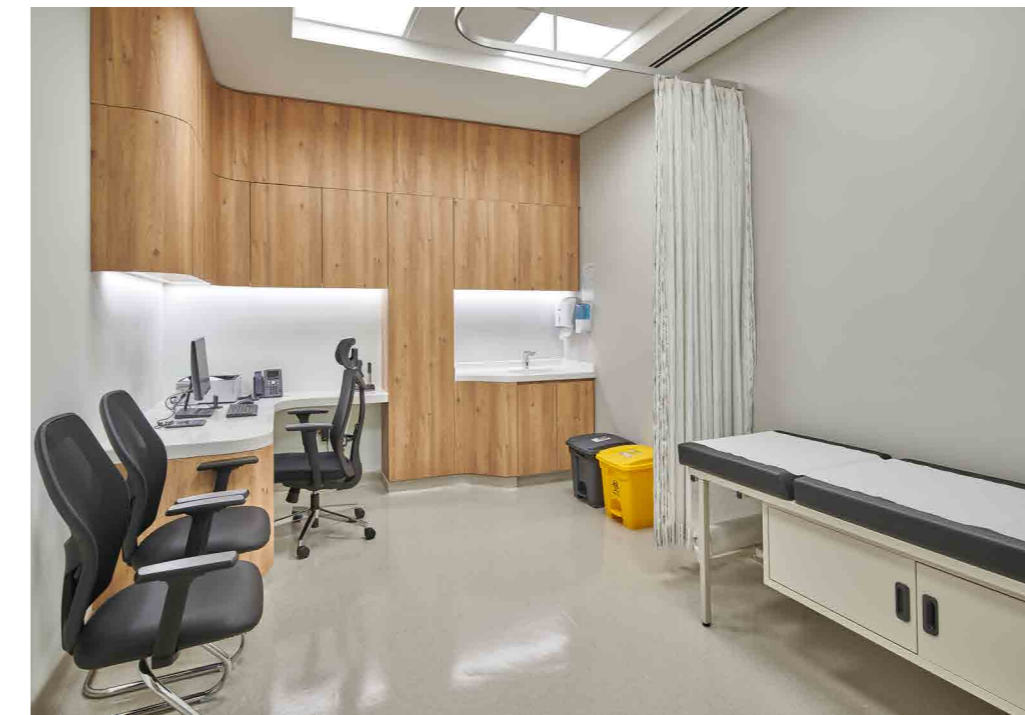
We are honoured to collaborate with Mediclinic on this project and look forward to continuing our commitment to delivering exceptional healthcare environments.

Size: 300 sqm

Location: Abu Dhabi, UAE

Sector: Healthcare

Designer: Summertown Interiors



## MEDICLINIC CREEK HARBOUR

Mediclinic is conveniently located in the heart of Dubai Creek Harbour. The modern and welcoming medical facility provides a warm, supportive and kid-friendly environment where individuals and families can pursue optimal health and wellbeing while feeling comfortable and cared for. Summertown was appointed to fit out the new design from Massa Interior Design & Architecture.

The scope of the fit out included the merging of three existing ground floor units into one and incorporated new patient waiting areas, consultation rooms, nurse's station, and medical utility rooms.

**Size:** 872 sqm

**Location:** Dubai, UAE

**Sector:** Healthcare

**Designer:** Massa Interior Design & Architecture



## MEDICLINIC CITY HOSPITAL GROUND FLOOR & AUXILIARY OFFICES

Mediclinic City Hospital is located in Dubai Healthcare City and was the first multi-disciplinary hospital in Dubai Healthcare City.

The modern and welcoming medical facility provides a warm, supportive environment where individuals and families can pursue optimal health and wellbeing while feeling comfortable and cared for. Summertown Interiors was appointed to fit out the new design from Massa Interior Design & Architecture.

Fit out works were carried out on the Ground Floor, Level 3 and Level 4 Ground Floor and included the Blood Bank, Offices, Reception and Waiting Area, Meeting Room, Staff Rooms and a Specimen Collection Area.

**Size:** 493 sqm

**Location:** Dubai, UAE

**Sector:** Healthcare

**Designer:** Massa Interior Design & Architecture



## MEDICLINIC PARKVIEW SPORTS MEDICINE & REHAB CENTRE

Mediclinic's Sports Medicine and Rehab Centre in Dubai, located in Mediclinic Parkview Hospital, is a first of its kind integrated facility for the treatment of sports injuries, sports performance, musculoskeletal complaints, and a full range of rehabilitation therapy.

Summertown undertook the full interior fit out of the 1,107 sqm Sport Medicine and Rehab Centre including a state-of-the-art gym that will enable the specialist medical professionals to develop bespoke programmes for their patients, patient rooms, and reception.

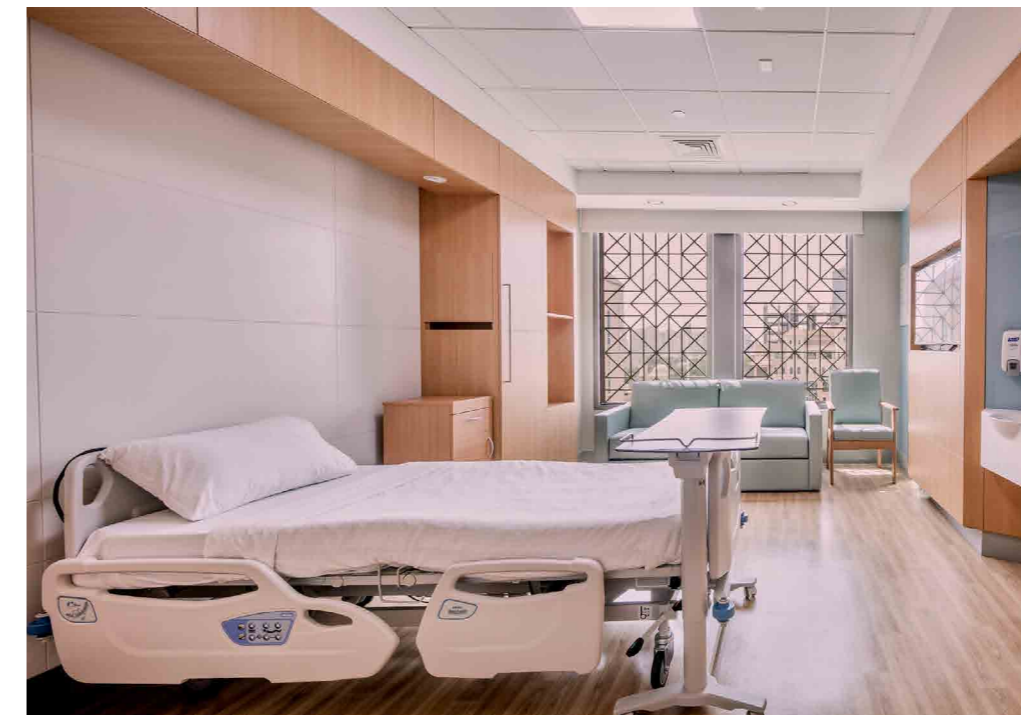
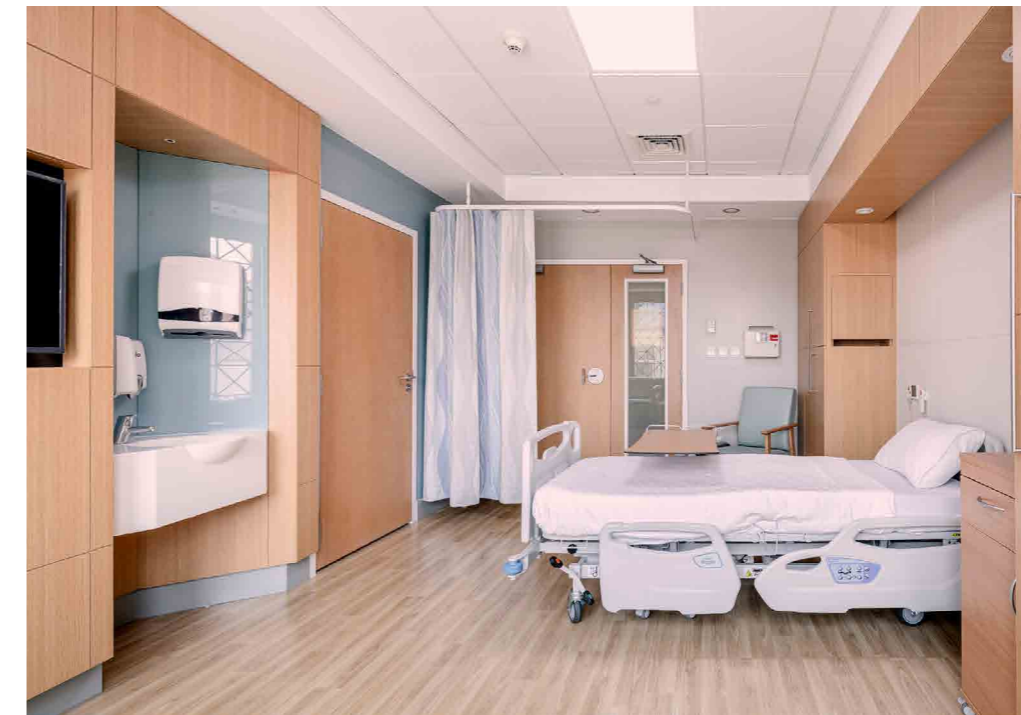
The design was achieved through a collaboration between, Stantec, who designed the main areas and patient rooms, and Leisure Direct Design who developed the design for the gym area.

Size: 1,107 sqm

Location: Dubai, UAE

Sector: Healthcare

Designer: Stantec & Leisure Direct



## MEDICLINIC CITY HOSPITAL L4

Summertown undertook the full interior fit out of the fourth floor of Mediclinic's City Hospital. Ensuring design continuity across the hospital, the new refurbished floor incorporates a nurse's station, 30 in-patient rooms with ensuite bathrooms, waiting area, and utility rooms.

Mediclinic City Hospital is a state-of-the-art multi-disciplinary hospital located in Dubai Healthcare City.

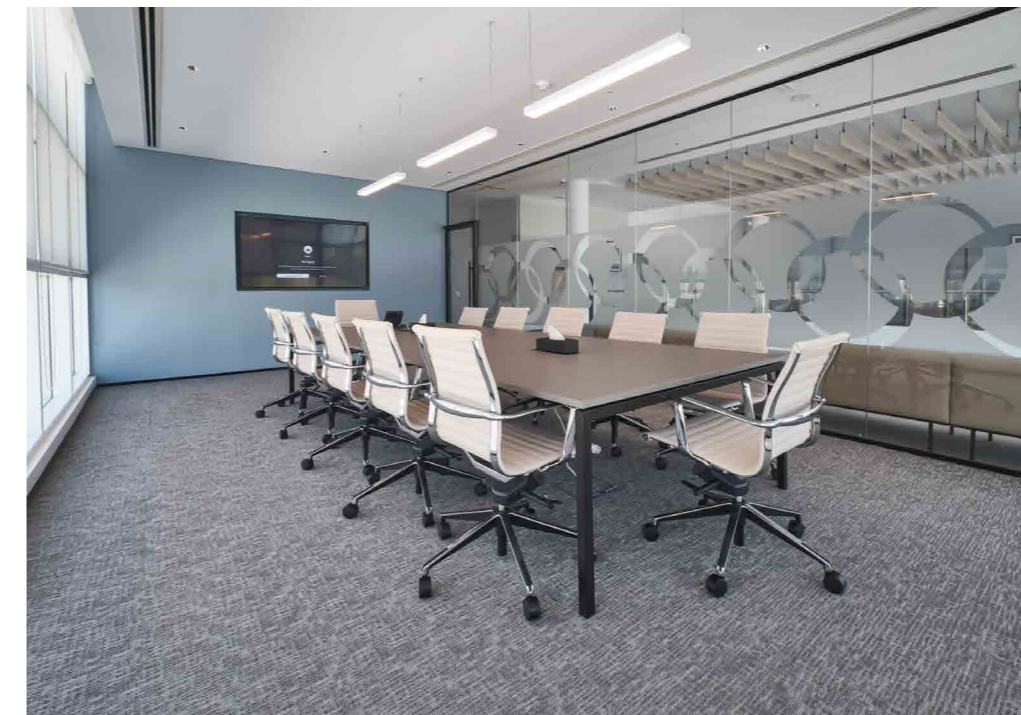
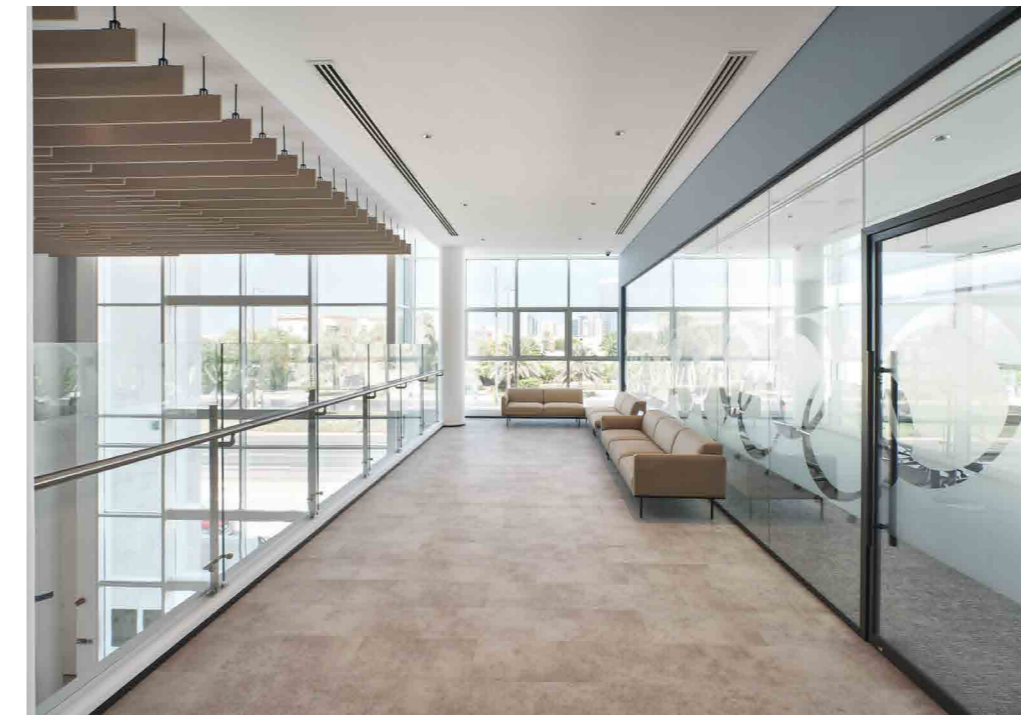
Mediclinic Middle East which is part of Mediclinic International, a private hospital group operating in Southern Africa, Switzerland and the United Arab Emirates (UAE), operates seven hospitals and over 20 clinics in the UAE.

**Size:** 1,500 sqm

**Location:** Dubai, UAE

**Sector:** Healthcare

**Designer:** Massa Interior Design & Architecture



## PRIORY WELLBEING CENTRE

The Priory Group, a leading healthcare provider from the United Kingdom, sought to establish a wellbeing clinic in Abu Dhabi following the success of its Dubai Wellbeing Centre which opened in 2017.

The new Abu Dhabi Priory Wellbeing Centre is located in Al Bateen, Abu Dhabi, and are specialized in providing psychiatric and psychological mental health, neuro-developmental and behavioural assessments and treatment to adults and children.

The brief was to transform a new villa into a welcoming wellbeing centre for specialist consultations, including wellbeing, occupational, and speech therapy.

Key to Priory's wellbeing centre was a space with a calming atmosphere for adults and children, and consultation rooms and areas that provided privacy. Designed by LXA, translated by Summertown Interiors, and project managed by PMK Consult, the new wellbeing centre design incorporates a subtle colour palette, natural timber finishes, opaque glazing for privacy and UAE inspired wall graphics.

The children's consultation and play areas are soothing spaces with acoustically treated seating nooks to allow for a quieter and more private waiting experience.

**Size:** 1,024 sqm

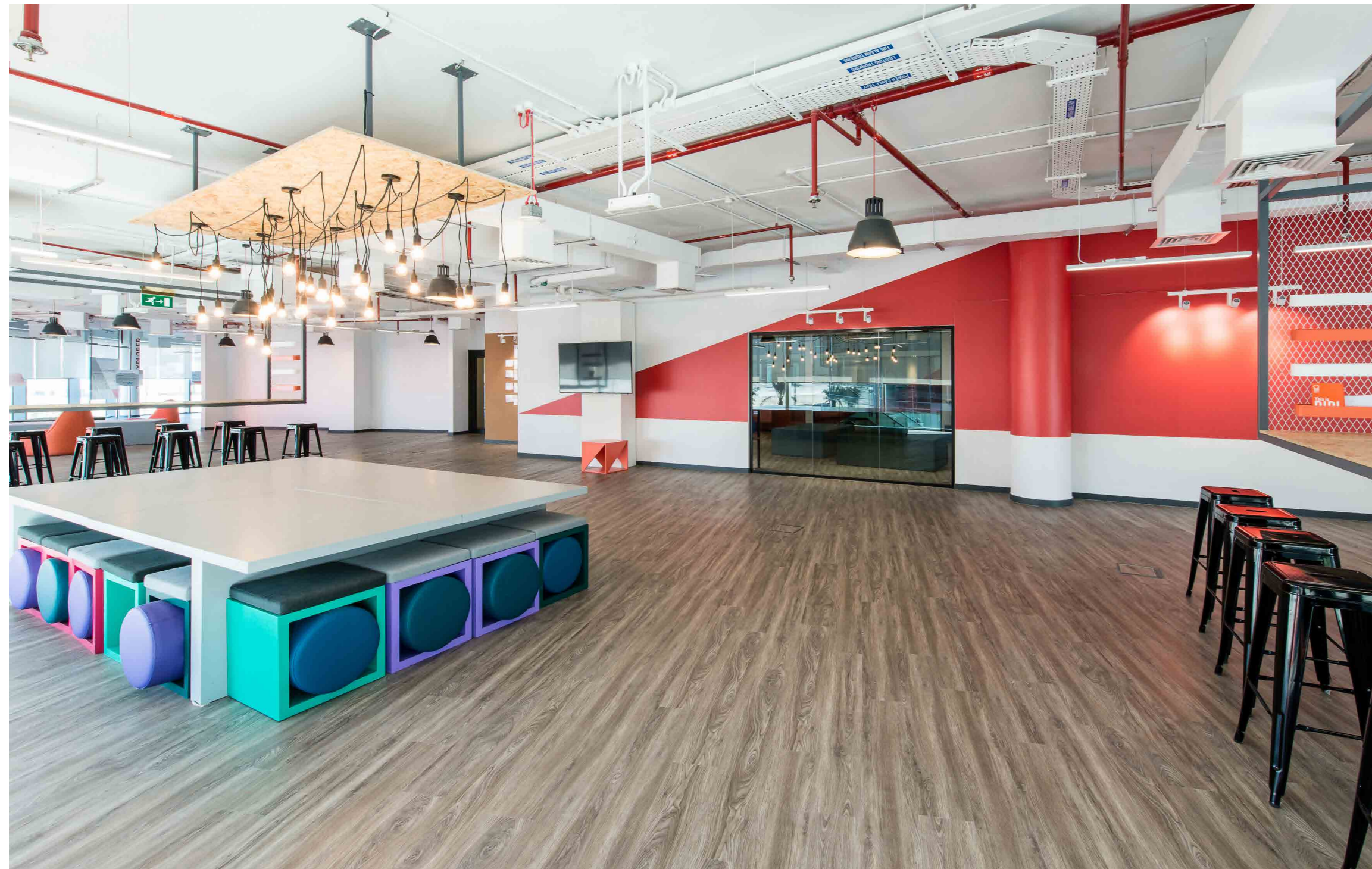
**Location:** Abu Dhabi, UAE

**Sector:** Healthcare

**Designer:** LXA & Summertown Interiors



EDUCATION PROJECT



## DUBAI INSTITUTE OF DESIGN & INNOVATION

The Dubai Institute of Design and Innovation (DIDI) is a private, not-for-profit education institution, established by TECOM Group, part of Dubai Creative Clusters Authority.

Located within the Dubai Design District (d3), DIDI's curriculum has been developed in collaboration with two of the world's leading universities for design; Massachusetts Institute of Technology (MIT) and Parsons School of Design.

The fit out project consisted of an admissions and administration office on the ground floor, and a library and student working area on the mezzanine floor.

DIDI's temporary home was designed to be fresh, modern and functional until completion of their new d3 campus designed by architects Foster + Partners.

Size: 2,105 sqm

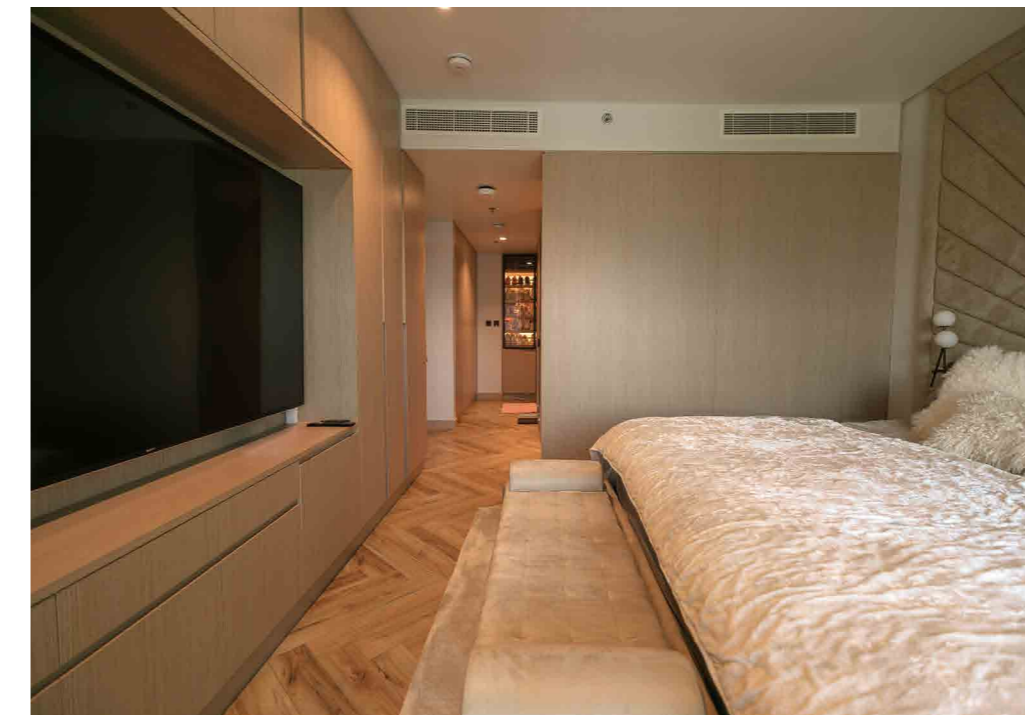
Location: Dubai, UAE

Sector: Education

Designer: Design Design

A close-up photograph of a Christmas tree branch. The branch is covered in warm white lights that are out of focus, creating a bokeh effect. Several gold star-shaped ornaments are visible, some in sharp focus and others blurred. The background is dark, making the lights and ornaments stand out.

RESIDENTIAL PROJECT



## CONFIDENTIAL

Located in the prestigious Jumeirah Islands, this residential project is a true transformation story.

We took this beautiful home from demolition through to a complete bespoke fit out, reimagining the space from the ground up. Every detail was carefully designed and executed, from structural changes to refined interiors, premium finishes, and seamless functionality.

The result is a sophisticated, modern home that balances elegance, comfort, and craftsmanship, tailored perfectly for luxurious island living in one of Dubai's most sought after communities.

Size: 2,400 sqm

Location: Dubai, UAE

Sector: Residential

# OUR SUSTAINABILITY STRATEGY

We are a market leader in embedding green processes and delivering sustainable fit outs, driving efficiency through innovation and green-certified assets. Our sustainability ambitions is rooted within our corporate DNA to deliver lasting positive impact for our clients, environment, industry and surrounding communities.

   <h3>SUSTAINABLE DELIVERY</h3> <p>Delivering sustainable and quality fit outs for our clients to achieve environmental, social and economic value and reduce operational cost in line with LEED and WELL certification. 100% Summertown projects and responsible delivery to meet externally accredited green/ sustainability standards by 2030.</p> <table border="0"> <tr> <td>LEED &amp; WELL Certifications</td> <td>Waste &amp; Circularity</td> </tr> <tr> <td>Technology</td> <td>Regulation</td> </tr> <tr> <td>Health, Safety and Environment</td> <td>Consumption and Impact</td> </tr> </table>	LEED & WELL Certifications	Waste & Circularity	Technology	Regulation	Health, Safety and Environment	Consumption and Impact	  <h3>ETHICAL BUSINESS</h3> <p>Strengthening our ability to adapt, innovate and maintain ethical and sustainable growth, withstanding market changes and continuously seeking to improve our operations</p> <p>Generating value for our clients, nation and the environment around us.</p> <table border="0"> <tr> <td>Economic</td> <td>Sustainability DNA</td> </tr> <tr> <td>Procurement</td> <td>Transparency &amp; Anti Corruption</td> </tr> <tr> <td>Awareness Building</td> <td></td> </tr> </table>	Economic	Sustainability DNA	Procurement	Transparency & Anti Corruption	Awareness Building		  <h3>PRODUCTIVE WORKFORCE</h3> <p>Continuously build a high-trust, productive, and happy workforce by improving our employee experience.</p> <p>Continuously strive to be a great place to work.</p> <table border="0"> <tr> <td>People</td> <td>Education &amp; Training</td> </tr> <tr> <td>Diversity and Equality</td> <td>Forced or Compulsory Labour</td> </tr> <tr> <td>Employee Health and Wellbeing</td> <td>Human Rights</td> </tr> </table>	People	Education & Training	Diversity and Equality	Forced or Compulsory Labour	Employee Health and Wellbeing	Human Rights
LEED & WELL Certifications	Waste & Circularity																			
Technology	Regulation																			
Health, Safety and Environment	Consumption and Impact																			
Economic	Sustainability DNA																			
Procurement	Transparency & Anti Corruption																			
Awareness Building																				
People	Education & Training																			
Diversity and Equality	Forced or Compulsory Labour																			
Employee Health and Wellbeing	Human Rights																			

For more information on our sustainability strategy please visit our [Sustainability Hub](#) on our website.



## AFTER SALES SERVICE

Even when your project is finished we have a team to help. **Plus Works** is our dedicated small works department that services small projects for loyal clients and Defects Liability Period (DLP) maintenance requests. The Plus Works team provide fast professional service whilst ensuring attention to detail.

# GET IN TOUCH WITH US

## **Dubai Head Office**

### **Summertown Interiors**

PO Box 262807

Jebel Ali Free Zone

Dubai

United Arab Emirates

Tel: +971 4 805 3300

## **Abu Dhabi**

### **Summertown Interiors**

PO Box 43530

Abu Dhabi

United Arab Emirates

Tel: +971 2 665 2003



[info@summertown.ae](mailto:info@summertown.ae)



[www.summertown.ae](http://www.summertown.ae)